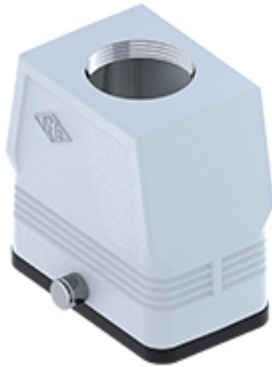


Part number

# MFV 10 GYC40



Hood, CENTRAL LEVER series, with 2 pegs, M40 top cable entry without adapter, size "57.27", high construction

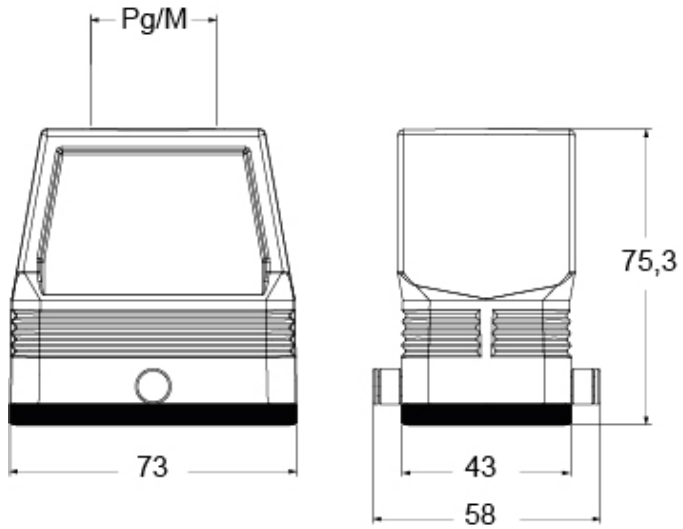
Product description		Material properties	
<b>Product type</b>	Hood	<b>Other materials</b>	Gasket: NBR
<b>Series</b>	CENTRAL LEVER	<b>Colour</b>	RAL 7040 grey
<b>Closing type</b>	With 2 pegs	<b>RoHs conformity</b>	Compliant
<b>Size</b>	Size 57.27	<b>China RoHs - EFUP</b>	E
<b>Cable entry</b>	Top cable entry M40	<b>REACH SVHC substances</b>	No
<b>Specification</b>	High construction	Approvals / Standards	
Technical data		<b>UL</b>	ECBT2
<b>IP degree of protection</b>	IP65	<b>cUL</b>	ECBT8
Further technical details		General ordering information	
<b>Weight</b>	0,50 g	<b>EAN13 code</b>	8015747264914
<b>Operating temperature range (min, max)</b>	-40°C...+125°C	<b>eCl@ss 8.1</b>	27440202
		<b>ETIM 7.0</b>	EC000437
		Packaging Information	
		<b>Packaging length</b>	150,00 mm
		<b>Packaging height</b>	160,00 mm
		<b>Packaging width</b>	300,00 mm
		<b>Packaging volume</b>	7,20 dm <sup>3</sup>
		<b>Packaging description</b>	Carton box
		<b>Packaging quantity</b>	20 Pcs
		<b>Packaging EAN code</b>	8015747264921
		<b>Sub-packaging description</b>	Plastic packaging
		<b>Sub-packaging quantity</b>	5 Pcs
		<b>Sub-packaging EAN barcode</b>	8015747264938

Part number

# MFV 10 GYC40



## Catalogue drawings



## Notes

Dimensions shown in mm are not binding and may be changed without notice.