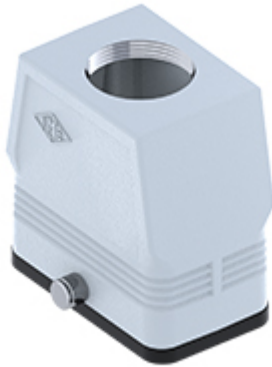


Part number

MFV 10 GYC32



Hood, CENTRAL LEVER series, with 2 pegs, M32 top cable entry without adapter, size "57.27", high construction

Product description

Product type	Hood
Series	CENTRAL LEVER
Closing type	With 2 pegs
Size	Size 57.27
Cable entry	Top cable entry M32
Specification	High construction

Technical data

IP degree of protection IP65

Further technical details

Weight	0,50 g
Operating temperature range (min, max)	-40°C...+125°C

Material properties

Other materials	Gasket: NBR
Colour	RAL 7040 grey
RoHs conformity	Compliant
China RoHs - EFUP	E
REACH SVHC substances	No

Approvals / Standards

UL	ECBT2
cUL	ECBT8

General ordering information

EAN13 code	8015747267007
eCl@ss 8.1	27440202
ETIM 7.0	EC000437

Packaging Information

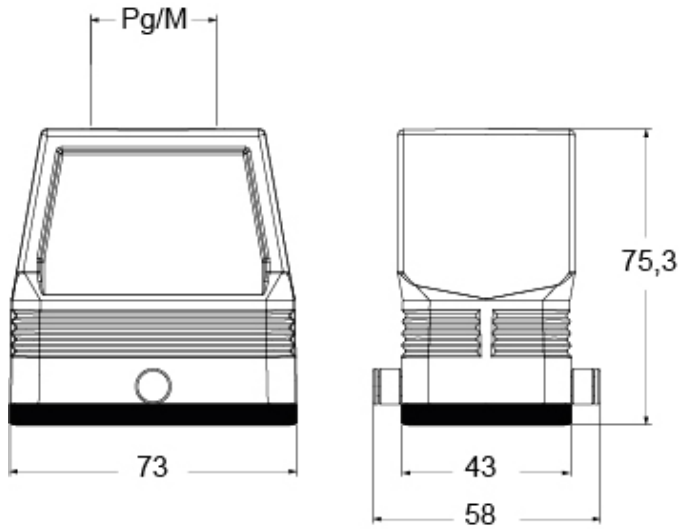
Packaging length	150,00 mm
Packaging height	160,00 mm
Packaging width	300,00 mm
Packaging volume	7,20 dm ³
Packaging description	Carton box
Packaging quantity	20 Pcs
Packaging EAN code	8015747221948
Sub-packaging description	Plastic packaging
Sub-packaging quantity	5 Pcs
Sub-packaging EAN barcode	8015747221955

Part number

MFV 10 GYC32



Catalogue drawings



Notes

Dimensions shown in mm are not binding and may be changed without notice.