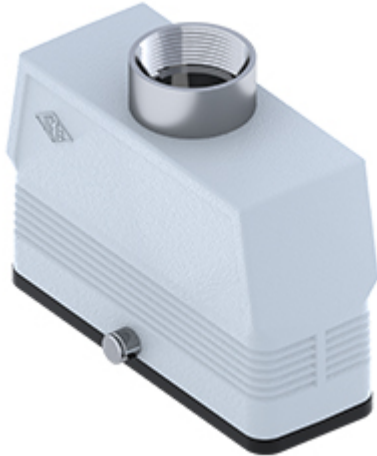


Part number

MAV 24 GYC40



Hood, CENTRAL LEVER series, with 2 pegs, M40 top cable entry, size "104.27", high construction

Product description

Product type	Hood
Series	CENTRAL LEVER
Closing type	With 2 pegs
Size	Size 104.27
Cable entry	Top cable entry with adapter M40
Specification	High construction

Technical data

IP degree of protection IP65

Further technical details

Weight	412,50 g
Operating temperature range (min, max)	-40°C...+125°C

Material properties

Other materials	Gasket: NBR
Colour	RAL 7040 grey
RoHs conformity	Compliant with exemption 6(c): copper alloy containing up to 4% lead by weight
China RoHs - EFUP	50
REACH SVHC substances	Yes Lead
SCIP number	15deaf78-e939-4401-a0b0-e2228ca32a03

Approvals / Standards

UL	ECBT2
cUL	ECBT8

General ordering information

EAN13 code	8015747259187
eCl@ss 8.1	27440202
ETIM 7.0	EC000437

Packaging Information

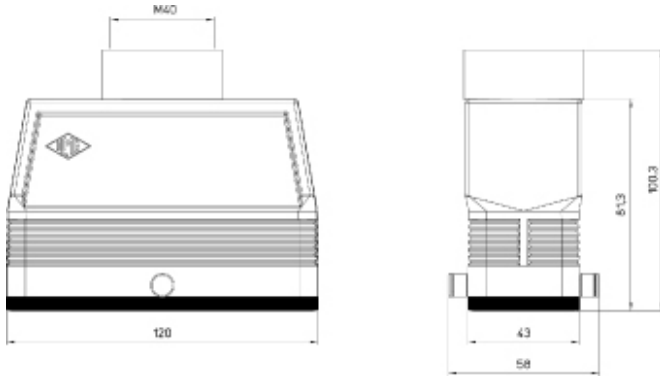
Sub-packaging weight	2,06 kg
Sub-packaging description	Plastic packaging
Sub-packaging quantity	5 Pcs
Sub-packaging EAN barcode	8015747259194

Part number

MAV 24 GYC40



Catalogue drawings



Notes

Dimensions shown in mm are not binding and may be changed without notice.