

Part number

MAV 24 GYC25



Hood, CENTRAL LEVER series, with 2 pegs, M25 top cable entry, size "104.27", high construction

Product description

Product type	Hood
Series	CENTRAL LEVER
Closing type	With 2 pegs
Size	Size 104.27
Cable entry	Top cable entry M25
Specification	High construction

Technical data

IP degree of protection IP65

Further technical details

Operating temperature range (min, max) -40°C...+125°C

Material properties

Other materials	Gasket: NBR
Colour	RAL 7040 grey
RoHs conformity	Compliant
China RoHs - EFUP	E
REACH SVHC substances	No

Approvals / Standards

UL	ECBT2
cUL	ECBT8

General ordering information

EAN13 code	8015747267120
eCl@ss 8.1	27440202
ETIM 7.0	EC000437

Packaging Information

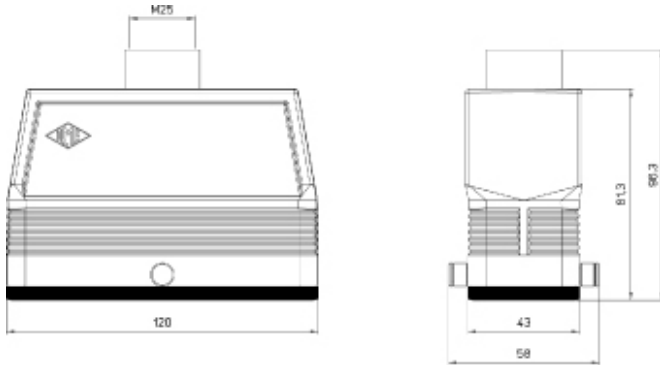
Sub-packaging description	Plastic packaging
Sub-packaging quantity	5 Pcs
Sub-packaging EAN barcode	8015747046794

Part number

MAV 24 GYC25



Catalogue drawings



Notes

Dimensions shown in mm are not binding and may be changed without notice.