

Part number

MAP 16 YC232



Surface mounting housing, CENTRAL LEVER series, with 2 pegs, M32 x 2 cable entry, size "77.27", high construction



Product description

Product type	Surface mounting housing
Series	CENTRAL LEVER
Closing type	With 2 pegs
Size	Size 77.27
Cable entry	With cable entry M32 x 2
Specification	High construction

Technical data

IP degree of protection	IP65 / IP66 / IP69
--------------------------------	--------------------

Further technical details

Weight	347,00 g
Operating temperature range (min, max)	-40°C...+125°C

Material properties

Other materials	Gasket: NBR
Colour	RAL 7040 grey
RoHs conformity	Compliant
China RoHs - EFUP	E
REACH SVHC substances	No

Approvals / Standards

UL	ECBT2
cUL	ECBT8

General ordering information

EAN13 code	8015747151733
eCl@ss 8.1	27440202
ETIM 7.0	EC000437

Packaging Information

Packaging length	475,00 mm
Packaging height	220,00 mm
Packaging width	175,00 mm
Packaging weight	3,90 kg
Packaging volume	18,29 dm ³
Packaging description	Carton box
Packaging quantity	10 Pcs
Packaging EAN code	8015747248303
Sub-packaging weight	1,95 kg
Sub-packaging description	Plastic packaging
Sub-packaging quantity	5 Pcs
Sub-packaging EAN barcode	8015747087162

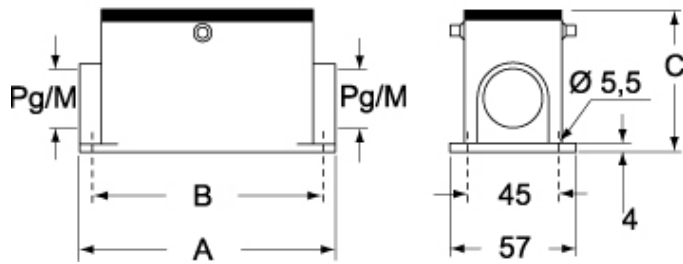
Part number

MAP 16 YC232



Catalogue drawings

CAP YC - MAP YC



Notes

Dimensions shown in mm are not binding and may be changed without notice.
