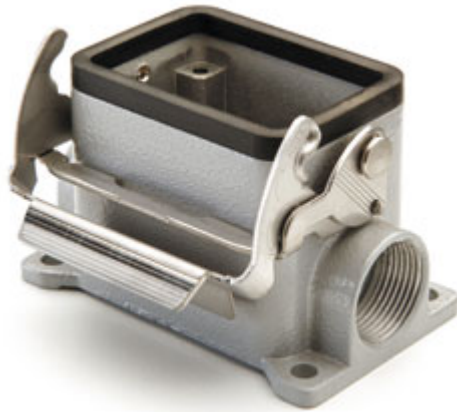


Part number

M7P 06 L20



Surface mounting housing, V-TYPE series, with 1 lever, M20 cable entry, size "44.27"

Product description		Material properties	
Product type	Surface mounting housing	Other materials	Lever: Stainless steel Gasket: NBR
Series	V-TYPE	Colour	RAL 7040 grey
Closing type	With 1 lever	RoHs conformity	Compliant
Size	Size 44.27	China RoHs - EFUP	E
Cable entry	With cable entry M20	REACH SVHC substances	No
Technical data		Approvals / Standards	
IP degree of protection	IP66 / IP67 / IP69	Certifications	DNV, BV
Further technical details		UL	ECBT2
Weight	201,00 g	cUL	ECBT8
Operating temperature range (min, max)	-40°C...+125°C	General ordering information	
		EAN13 code	8015747093606
		eCl@ss 8.1	27440202
		ETIM 7.0	EC000437
		Packaging Information	
		Packaging length	285,00 mm
		Packaging height	170,00 mm
		Packaging width	190,00 mm
		Packaging weight	4,30 kg
		Packaging volume	9,21 dm ³
		Packaging description	Carton box
		Packaging quantity	20 Pcs
		Packaging EAN code	8015747178259
		Sub-packaging weight	1,08 kg
		Sub-packaging description	Plastic packaging
		Sub-packaging quantity	5 Pcs
		Sub-packaging EAN barcode	8015747178266

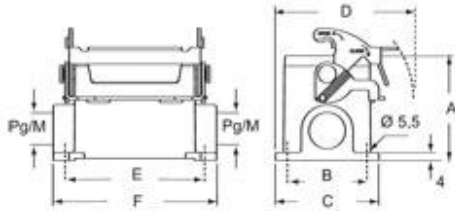
Part number

M7P 06 L20



Catalogue drawings

C7P L - C7AP L M7P L - M7AP L



	A	B	C	D	E	F
C7P/M7P 06 L	53	40	52	70	70	82
C7AP/M7AP 06 L	73	45	57	72,5	70	82

Notes

C7P/M7P:

Due to the vertical closing movement, the new lever offers an IP66/IP67 protection (according to EN 60529) when fitted with a complete and coupled connector and used with ILME standard hoods in die cast aluminum with pegs (without adaptor).

Dimensions shown in mm are not binding and may be changed without notice.