

Part number

M7AP 06LS232



Surface mounting housing, V-TYPE series, with 1 lever, M32 x 2 cable entry, size "44.27", high construction, with metal cover

Product description

Product type	Surface mounting housing
Series	V-TYPE
Closing type	With 1 lever
Size	Size 44.27
Cable entry	With cable entry M32 x 2
Specification	High construction, with metal cover

Technical data

IP degree of protection IP66 / IP67 / IP69

Further technical details

Operating temperature range (min, max) -40°C...+125°C

Material properties

Other materials	Lever: Stainless steel Gasket: NBR
Colour	RAL 7040 grey
RoHs conformity	Compliant
China RoHs - EFUP	E
REACH SVHC substances	No

Approvals / Standards

Certifications	DNV, BV
UL	ECBT2
cUL	ECBT8

General ordering information

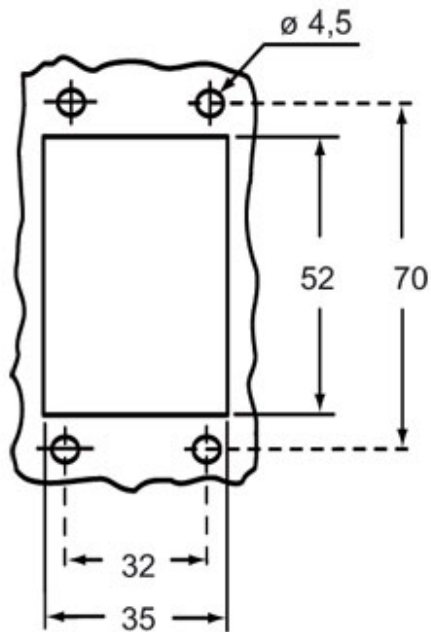
EAN13 code	8015747240093
eCl@ss 8.1	27440202
ETIM 7.0	EC000437

Part number

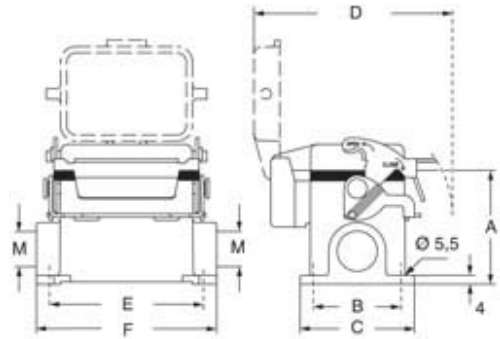
M7AP 06LS232



Catalogue drawings



Catalogue drawings



type	A	B	C	D	E	F
M7P 06 LS	53	40	52	91	70	82
M7AP 06 LS	73	45	57	91	70	82

Notes

Dimensions shown in mm are not binding and may be changed without notice.