

Part number

JMPAP 24.232



Surface mounting housing, JEI®-P series, with 2 levers, M32 x 2 cable entry, size "104.27", high construction

Product description

Product type	Surface mounting housing
Series	JEI®-P
Closing type	With 2 levers
Size	Size 104.27
Cable entry	With cable entry M32 x 2
Specification	High construction

Technical data

IP degree of protection IP65

Further technical details

Operating temperature range (min, max) -40°C...+125°C

Material properties

Other materials	Lever: Polyamide (PA) Gasket: NBR
Colour	RAL 7040 grey

Approvals / Standards

Certifications DNV, BV

General ordering information

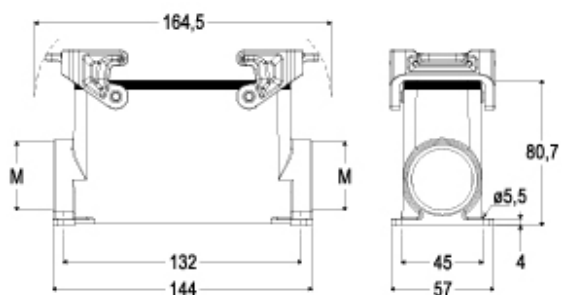
EAN13 code 8015747219082

Part number

JMPAP 24.232



Catalogue drawings



Notes

Dimensions shown in mm are not binding and may be changed without notice.