

Part number

JMPAP 10L232



Surface mounting housing, JEI®-P series, with 1 lever, M32 x 2 cable entry, size 57.27, high construction

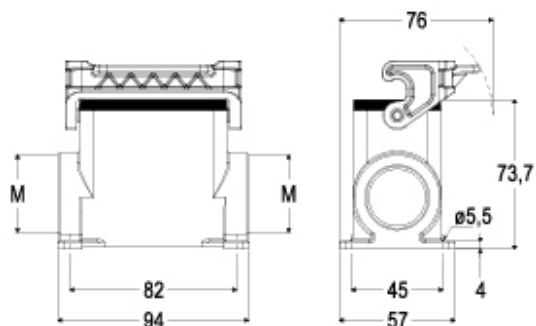
| Product description | | Material properties | |
|---|-----------------------------|-------------------------------------|-----------------------|
| Product type | Surface mounting housing | Colour | RAL 7040 grey |
| Series | JEI®-P | Approvals / Standards | |
| Closing type | With 1 lever | Certifications | DNV, BV |
| Size | Size 57.27 | General ordering information | |
| Cable entry | With cable entry M32 x 2 | EAN13 code | 8015747303613 |
| Specification | High construction | Packaging Information | |
| Technical data | | Packaging length | 475,00 mm |
| IP degree of protection | IP65 | Packaging height | 200,00 mm |
| Further technical details | | Packaging width | 150,00 mm |
| Weight | 1,00 g | Packaging volume | 14,25 dm ³ |
| Operating temperature range (min, max) | -40°C...+125°C | Packaging description | Carton box |
| | | Packaging quantity | 10 Pcs |
| | | Packaging EAN code | 8015747019248 |
| | | Sub-packaging description | Plastic packaging |
| | | Sub-packaging quantity | 5 Pcs |
| | | Sub-packaging EAN barcode | 8015747020367 |

Part number

JMPAP 10L232



Catalogue drawings



Notes

Dimensions shown in mm are not binding and may be changed without notice.
