

Part number

# JMPAP 10 L25



Surface mounting housing, JEl®-P series, with 1 lever, M25 cable entry, size 44.27, high construction

#### Product description

<b>Product type</b>	Surface mounting housing
<b>Series</b>	JEl®-P
<b>Closing type</b>	With 1 lever
<b>Size</b>	Size 57.27
<b>Cable entry</b>	With cable entry M25
<b>Specification</b>	High construction

#### Technical data

<b>IP degree of protection</b>	IP65
--------------------------------	------

#### Further technical details

<b>Operating temperature range (min, max)</b>	-40°C...+125°C
---	----------------

#### Material properties

<b>Other materials</b>	Lever: Polyamide (PA) Gasket: NBR
<b>Colour</b>	RAL 7040 grey

#### General ordering information

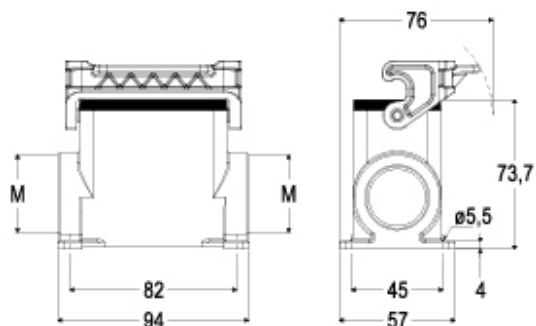
<b>EAN13 code</b>	8015747033749
-------------------	---------------

Part number

# JMPAP 10 L25



## Catalogue drawings



## Notes

Dimensions shown in mm are not binding and may be changed without notice.

---