

Part number

FM 910 RC



Cover, FM series, reduction for domestic use
(GW 27401 or BTCQ 25502)

Product description

Product type	Cover
Series	FM
Size	90 x 100 mm
Specification	Reduction for domestic use (GW 27401 or BTCQ 25502)

Further technical details

Weight	35,00 g
Operating temperature range (min, max)	-40°C ... +125°C

Material properties

Colour	RAL 7035 grey
---------------	---------------

General ordering information

EAN13 code	8015747048002
-------------------	---------------

Packaging Information

Sub-packaging weight	0,04 kg
Sub-packaging description	Plastic packaging
Sub-packaging quantity	1 Pcs
Sub-packaging EAN barcode	8015747048019

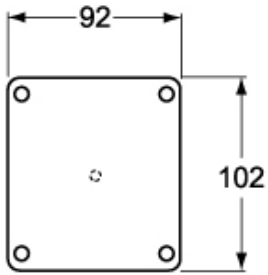
Part number

FM 910 RC

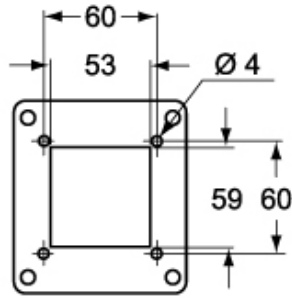


Catalogue drawings

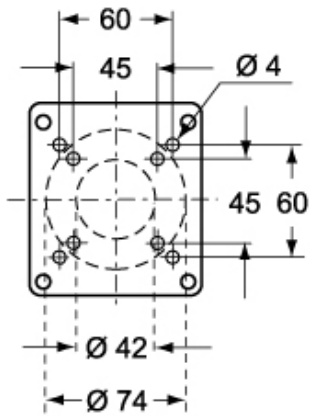
FM 910 CVU



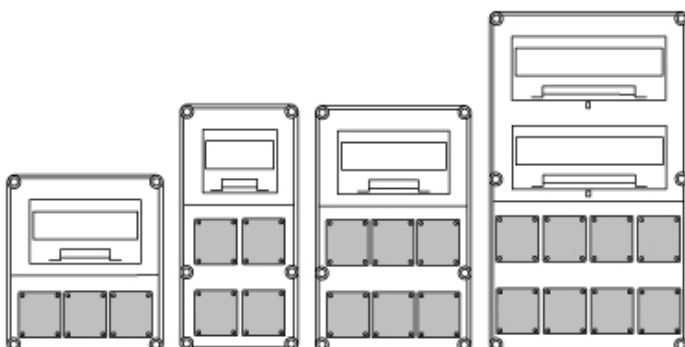
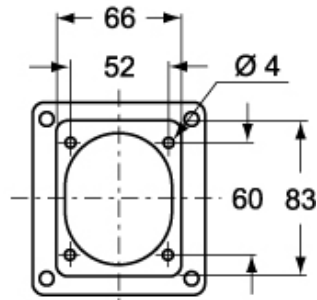
FM 910 RC



FM 910 CV



FM 910 RI



Notes

Dimensions shown in mm are not binding and may be changed without notice.
