

Part number

# CZV 25 LG



Hood, IL-BRID series, with 1 lever, Pg16 top cable entry, size "66.16"

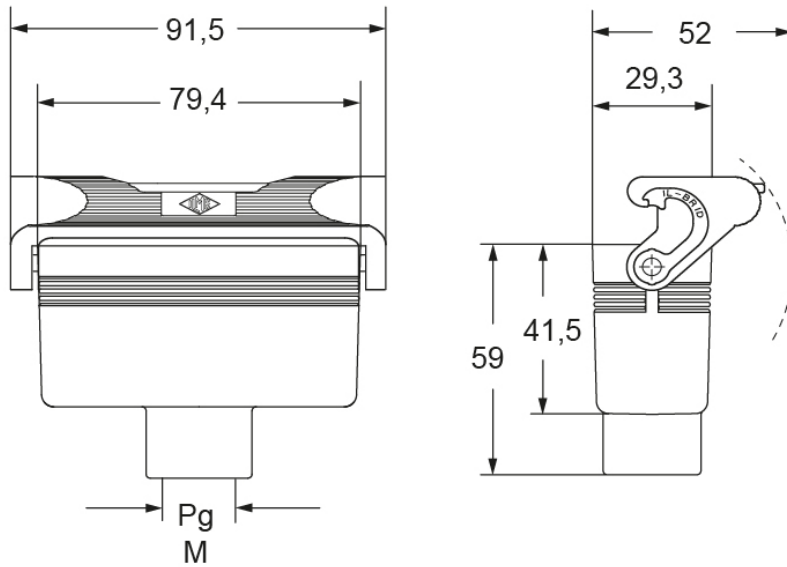
Product description		Material properties	
<b>Product type</b>	Hood	<b>Other materials</b>	Lever: Polyamide (PA) and Stainless steel core
<b>Series</b>	IL-BRID	<b>Colour</b>	RAL 7040 grey
<b>Closing type</b>	With 1 lever	<b>RoHs conformity</b>	Compliant
<b>Size</b>	Size 66.16	<b>China RoHs - EFUP</b>	E
<b>Cable entry</b>	Top cable entry Pg16	<b>REACH SVHC substances</b>	No
Technical data		Approvals / Standards	
<b>IP degree of protection</b>	IP66 / IP67 / IP69	<b>UL</b>	ECBT2
<b>Further technical details</b>		<b>cUL</b>	ECBT8
Further technical details		General ordering information	
<b>Weight</b>	115,00 g	<b>EAN13 code</b>	8015747044943
<b>Operating temperature range (min, max)</b>	-40°C...+125°C	Packaging Information	
		<b>Packaging length</b>	180,00 mm
		<b>Packaging height</b>	105,00 mm
		<b>Packaging width</b>	270,00 mm
		<b>Packaging weight</b>	1,26 kg
		<b>Packaging volume</b>	5,10 dm <sup>3</sup>
		<b>Packaging description</b>	Carton box
		<b>Packaging quantity</b>	10 Pcs
		<b>Packaging EAN code</b>	8015747044950
		<b>Sub-packaging weight</b>	0,63 kg
		<b>Sub-packaging description</b>	Plastic packaging
		<b>Sub-packaging quantity</b>	5 Pcs
		<b>Sub-packaging EAN barcode</b>	8015747217675

Part number

# CZV 25 LG



Catalogue drawings



## Notes

Dimensions shown in mm are not binding and may be changed without notice.