

Part number

CZ7P 25LS221



Surface mounting housing, CZ7 series, with 1 lever, Pg21 x 2 cable entry, size 66.16, high construction, with metal cover

Product description

| | |
|----------------------|-------------------------------------|
| Product type | Surface mounting housing |
| Series | CZ7 |
| Closing type | With 1 lever |
| Size | Size 66.16 |
| Cable entry | With cable entry Pg21 x 2 |
| Specification | High construction, with metal cover |

Technical data

IP degree of protection IP66 / IP67 / IP69

Further technical details

| | |
|---|----------------|
| Weight | 260,00 g |
| Operating temperature range (min, max) | -40°C...+125°C |

Material properties

| | |
|------------------------------|------------------------|
| Other materials | Lever: Stainless steel |
| Colour | RAL 7040 grey |
| RoHs conformity | Compliant |
| China RoHs - EFUP | E |
| REACH SVHC substances | No |

Approvals / Standards

| | |
|------------|-------|
| UL | ECBT2 |
| cUL | ECBT8 |

General ordering information

| | |
|-------------------|---------------|
| EAN13 code | 8015747245517 |
| eCl@ss 8.1 | 27440202 |
| ETIM 7.0 | EC000437 |

Packaging Information

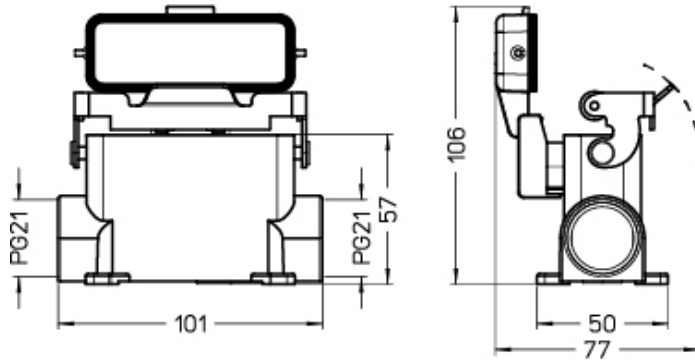
| | |
|----------------------------------|----------------------|
| Packaging length | 190,00 mm |
| Packaging height | 125,00 mm |
| Packaging width | 330,00 mm |
| Packaging weight | 2,60 kg |
| Packaging volume | 7,84 dm ³ |
| Packaging description | Carton box |
| Packaging quantity | 10 Pcs |
| Packaging EAN code | 8015747245555 |
| Sub-packaging weight | 1,30 kg |
| Sub-packaging description | Plastic packaging |
| Sub-packaging quantity | 5 Pcs |
| Sub-packaging EAN barcode | 8015747245562 |

Part number

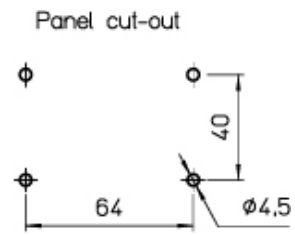
CZ7P 25LS221



Catalogue drawings



Catalogue drawings



Notes

Dimensions shown in mm are not binding and may be changed without notice.
