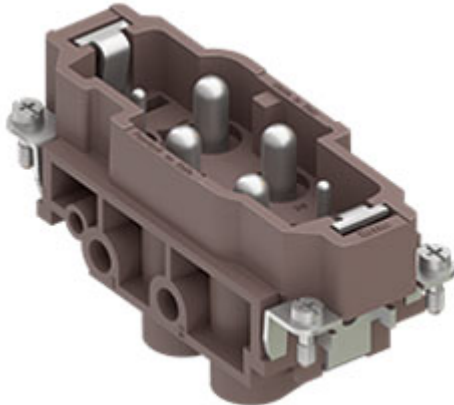



Part number

CXM 4/2 RY



Male insert, CX RY series, screw terminal connection, 4 + 2 poles + PE, 80 A 830 V 8 kV 3 / 16 A 400 V 6 kV 3, size "77.27", for applications up to 180°C

Product description		Material properties	
Product type	Insert	Main material	Polyphenylene sulfide (PPS)
Series	CX RY	Other materials	Contacts: copper alloy
Connection type	Screw terminal connection		Compliant with exemption 6(c): copper alloy containing up to 4% lead by weight
Gender	Male	RoHs conformity	
N. of poles	4 poles + 	China RoHs - EFUP	50
Auxiliary poles	2 poles	REACH SVHC substances	Yes Lead
Size	Size 77.27	SCIP number	1a9c93ff-0445-4a16-81e3-1609ac5274d6
Specification	For applications up to 180°C	Approvals / Standards	
Technical data		Certifications	CSA, CQC, DNV, BV, EAC
Current	80 A	UL	ECBT2
Voltage	830 V	cUL	ECBT8
Rated impulse withstand voltage	8 kV	General ordering information	
Pollution degree	3	EAN13 code	8015747245678
Rated voltage according to UL/CSA	600 V	eCl@ss 8.1	27440205
Wire cross-section	4,00 mm ² - 16,00 mm ²	ETIM 7.0	EC000438
AWG size	12 - 6	Packaging Information	
Contact type	Turned silver plated	Packaging length	245,00 mm
IP degree of protection	IP20 without enclosure, IP65 with enclosure	Packaging height	165,00 mm
Further technical details		Packaging width	215,00 mm
Characteristics according to EN 61984	80A 830V 8kV 3; 16A 400V 6kV 3; 16A 400/690V 6kV 2	Packaging weight	4,40 kg
Mating cycles	≥ 500	Packaging volume	8,69 dm ³
Insulation resistance	≥ 10 GΩ	Packaging description	Carton box
Contact resistance	≤ 0,3 mΩ (4 poles); ≤ 1 mΩ (2 poles)	Packaging quantity	30 Pcs
Weight	128,00 g	Packaging EAN code	8015747245708
Operating temperature range (min, max)	-40°C ... +180°C	Sub-packaging length	87,00 mm
UL 94 flammability rating	V-0	Sub-packaging height	36,00 mm
		Sub-packaging width	180,00 mm
		Sub-packaging weight	0,73 kg
		Sub-packaging volume	0,56 dm ³
		Sub-packaging description	Carton tray
		Sub-packaging quantity	5 Pcs
		Sub-packaging EAN barcode	8015747245715

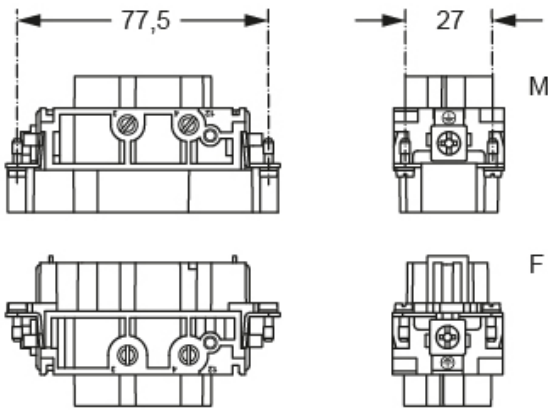
Part number

CXM 4/2 RY

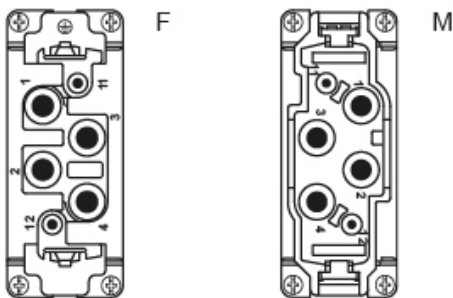


Catalogue drawings

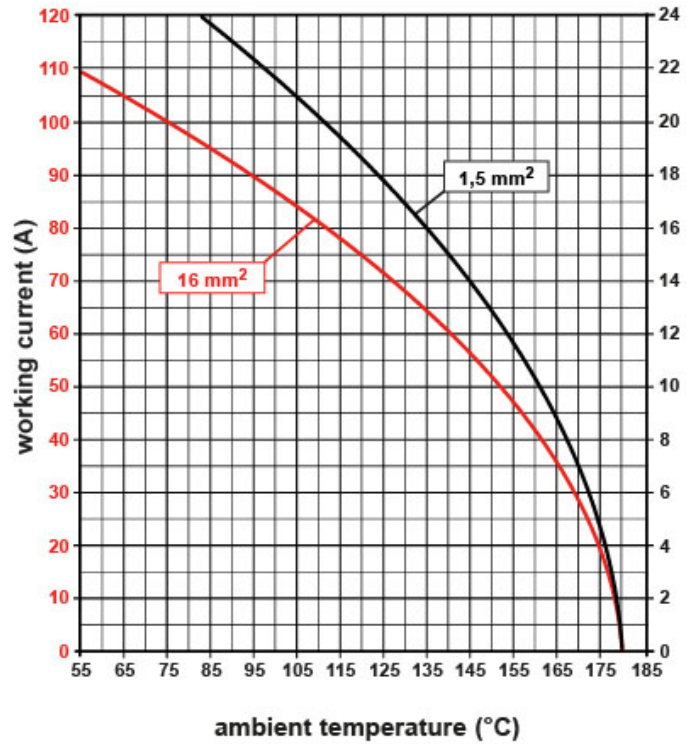
Derating curves



contacts side (front view)



CX RY 4/2 poles connector inserts
Maximum current load derating diagram



Notes

Dimensions shown in mm are not binding and may be changed without notice.

California Proposition 65 Information



WARNING

This product can expose you to lead and its compounds, known to the State of California to cause cancer and/or reproductive toxicity. For more information go to www.P65Warnings.ca.gov.

California Proposition 65 Information



WARNING

This product can expose you to lead and its compounds, known to the State of California to cause cancer and/or reproductive toxicity. For more information go to www.P65Warnings.ca.gov.
