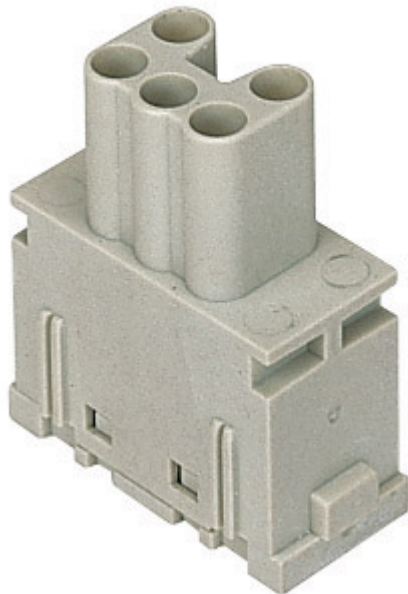


Part number

CX 05 SF



Female modular insert, Mixo series, spring terminal connection, 5 poles, 1 module, 16 A 400 V 6 kV 3

Product description		Material properties	
Product type	Modular insert	Main material	Polycarbonate
Series	Mixo	Colour	RAL 7032 grey
Connection type	Spring terminal connection	RoHs conformity	Compliant with exemption 6(c): copper alloy containing up to 4% lead by weight
Gender	Female	China RoHs - EFUP	50
N. of poles	5 poles	REACH SVHC substances	Yes Lead
Size	1 module	SCIP number	1a9c93ff-0445-4a16-81e3-1609ac5274d6
Technical data		Approvals / Standards	
Current	16 A	Reference standard	EN 61984:2009-06
Voltage	400 V	Certifications	CSA, CQC, DNV, BV, EAC
Rated impulse withstand voltage	6 kV	UL	ECBT2
Pollution degree	3	cUL	ECBT8
Rated voltage according to UL/CSA	600 V	General ordering information	
Wire cross-section	0,14 mm ² - 2,50 mm ²	EAN13 code	8015747096041
AWG size	26 - 14	Packaging Information	
Contact type	Turned silver plated	Packaging length	180,00 mm
IP degree of protection	IP20 without enclosure, IP65/IP66/IP68/IP69 with enclosure	Packaging height	120,00 mm
Further technical details		Packaging width	155,00 mm
Characteristics according to EN 61984	16A 400V 6kV 3; 16A 500V 6kV 2	Packaging weight	1,24 kg
Insulation resistance	≥ 10 GΩ	Packaging volume	3,35 dm ³
Contact resistance	≤ 3 mΩ	Packaging description	Carton box
Weight	17,00 g	Packaging quantity	60 Pcs
Operating temperature range (min, max)	-40 °C ... +125 °C	Packaging EAN code	8015747221221
UL 94 flammability rating	V-0	Sub-packaging length	35,00 mm
		Sub-packaging height	40,00 mm
		Sub-packaging width	155,00 mm
		Sub-packaging weight	0,21 kg
		Sub-packaging volume	0,22 dm ³
		Sub-packaging description	Carton tray
		Sub-packaging quantity	10 Pcs
		Sub-packaging EAN barcode	8015747096058

Part number

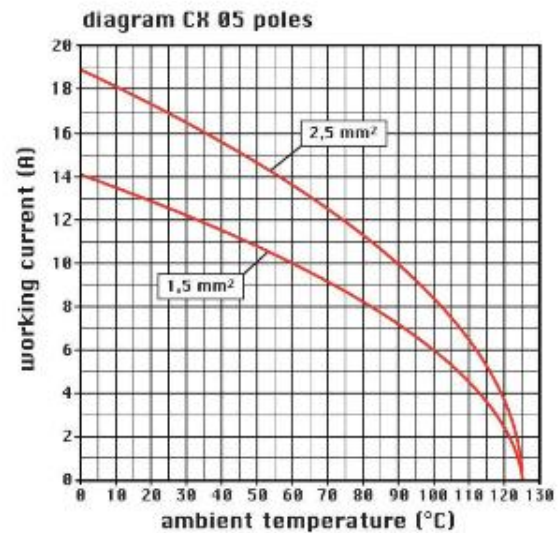
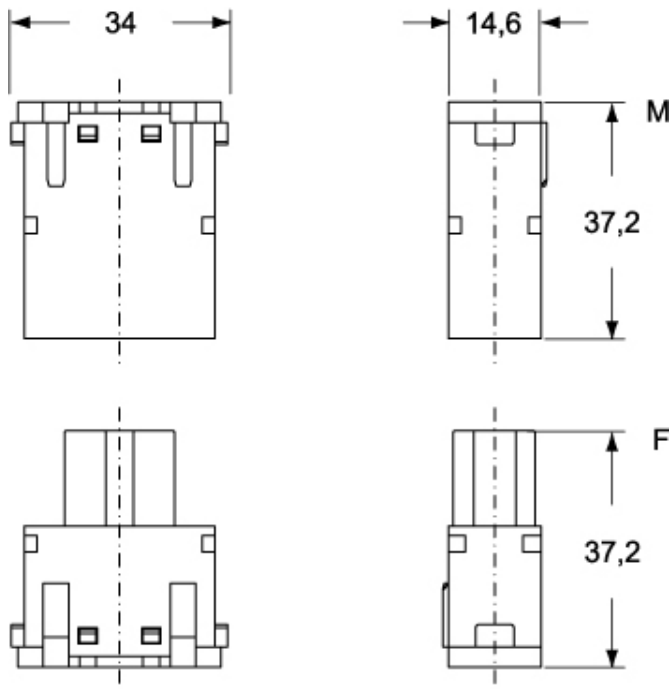
CX 05 SF



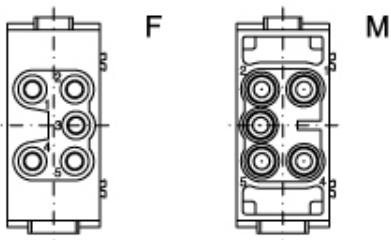
Catalogue drawings

Catalogue drawings

CX 05 SM



CX 05 SF



Notes

Standard modular inserts:
-in combination with standard contacts and standard frames (CX ... TF/TM); must be mounted either in traditional enclosures or in COB panel supports (both up to 500 matings).

Dimensions shown in mm are not binding and may be changed without notice.

California Proposition 65 Information



WARNING

This product can expose you to lead and its compounds, known to the State of California to cause cancer and/or reproductive toxicity. For more information go to www.P65Warnings.ca.gov.
