

Part number

CX 03 4F



Female modular insert, Mixo series, crimp connection, 3 poles, 1 module, 40 A 400/690 V 6 kV 3

Product description

Product type	Modular insert
Series	Mixo
Connection type	Crimp connection
Gender	Female
N. of poles	3 poles
Size	1 module
Specification	Standard & HNM (High Number of Matings)

Technical data

Current	40 A
Voltage	400 - 690 V
Rated impulse withstand voltage	6 kV
Pollution degree	3
Rated voltage according to UL/CSA	600 V
IP degree of protection	IP20 without enclosure, IP65/IP66/IP68/IP69 with enclosure

Further technical details

Characteristics according to EN 61984	40A 400/690V 6kV 3
Insulation resistance	≥ 10 GΩ
Contact resistance	≤ 0,3 mΩ
Weight	11,50 g
Operating temperature range (min, max)	-40 °C ... +125 °C
UL 94 flammability rating	V-0

Material properties

Main material	Polycarbonate
Colour	RAL 7032 grey
RoHs conformity	Compliant
China RoHs - EFUP	E
REACH SVHC substances	No

Approvals / Standards

Reference standard	EN 61984:2009-06
Certifications	CSA, CQC, DNV, BV, EAC
UL	ECBT2
cUL	ECBT8

General ordering information

EAN13 code	8015747041706
eCl@ss 8.1	27440205
ETIM 7.0	EC000438

Packaging Information

Packaging length	180,00 mm
Packaging height	120,00 mm
Packaging width	155,00 mm
Packaging weight	0,90 kg
Packaging volume	3,35 dm ³
Packaging description	Carton box
Packaging quantity	60 Pcs
Packaging EAN code	8015747221177
Sub-packaging length	35,00 mm
Sub-packaging height	40,00 mm
Sub-packaging width	155,00 mm
Sub-packaging weight	0,15 kg
Sub-packaging volume	0,22 dm ³
Sub-packaging description	Carton tray
Sub-packaging quantity	10 Pcs
Sub-packaging EAN barcode	8015747041713

Part number

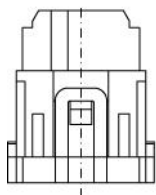
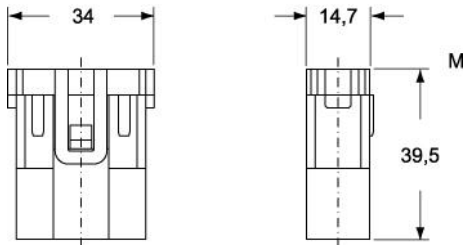
CX 03 4F



Catalogue drawings

Catalogue drawings

CX 03 4M



CX 03 4F

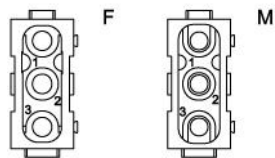
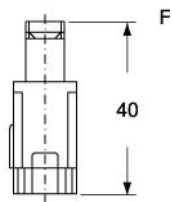
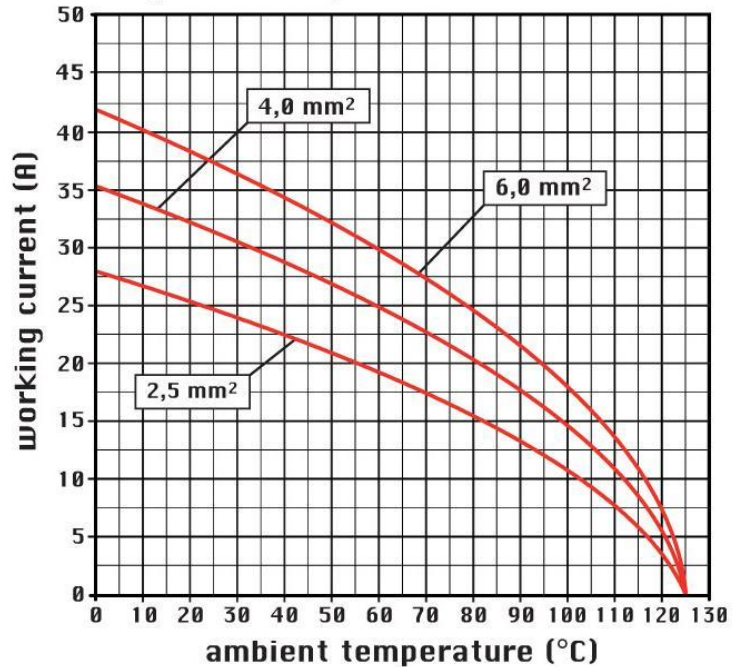


diagram CX 03 poles



Notes

STANDARD & HNM (High Number of Matings) MODULES

Standard:

-when in combination with standard contacts and standard frames (CX ... TF/TM), must be mounted either in traditional enclosures or in COB panel supports (both up to 500 matings).

HNM (High Number of Matings):

-when in combination with HNM contacts and HNM frames (RX ... TF/RM), must be mounted either in HNM enclosures (up to 10.000 matings) or in traditional enclosures with one lever (up to 5.000 matings).

Dimensions shown in mm are not binding and may be changed without notice.