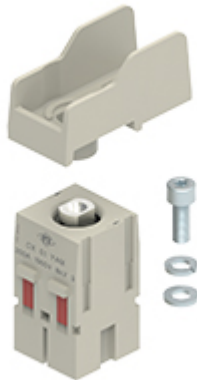


Part number

CX 01 YAM



Male modular insert, Mixo series, screw terminal connections - 90° angled for cable lug, 1 pole, 2 modules, 200 A 1000 V 8 kV 3

Product description

Product type	Modular insert
Series	Mixo
Connection type	Screw terminal connection
Gender	Male
N. of poles	1 pole
Size	2 modules
Specification	Angled MIXO Module

Technical data

Current	200 A
Voltage	1000 V
Rated impulse withstand voltage	8 kV
Pollution degree	3
Rated voltage according to UL/CSA	600 V
Wire cross-section	10,00 mm ² - 70,00 mm ²
Contact type	Turned silver plated
IP degree of protection	IP20 without enclosure, IP65/IP66/IP68/IP69 with enclosure

Further technical details

Insulation resistance	≥ 10 GΩ
Contact resistance	≤ 3 mΩ
Weight	84,50 g
Operating temperature range (min, max)	-40 °C ... +125 °C
UL 94 flammability rating	V-0

Material properties

Main material	Polycarbonate
Other materials	Contacts: copper alloy
Colour	RAL 7032 grey
RoHs conformity	Compliant with exemption 6(c): copper alloy containing up to 4% lead by weight
China RoHs - EFUP	50
REACH SVHC substances	Yes Lead

Approvals / Standards

Certifications	DNV
-----------------------	-----

General ordering information

EAN13 code	8015747284400
eCl@ss 8.1	27440205
ETIM 7.0	EC000438

Packaging Information

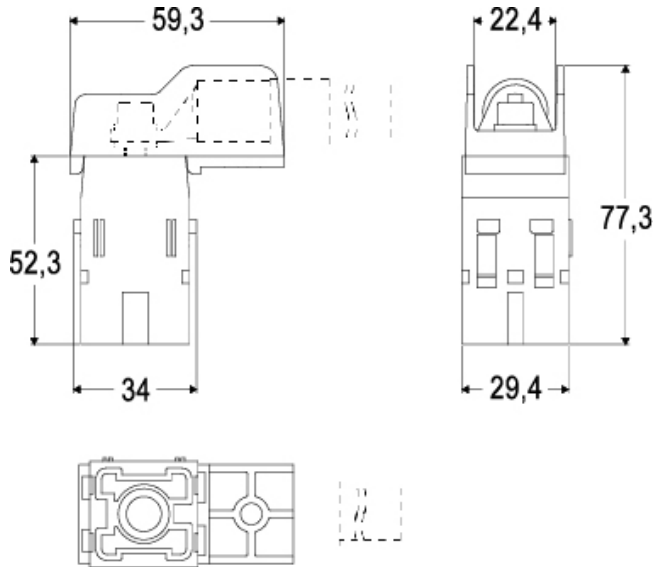
Packaging length	155,00 mm
Packaging height	115,00 mm
Packaging width	130,00 mm
Packaging weight	0,58 kg
Packaging volume	2,32 dm ³
Packaging description	Carton box
Packaging quantity	5 Pcs
Packaging EAN code	8015747291972
Sub-packaging weight	0,12 kg
Sub-packaging description	Plastic bag
Sub-packaging quantity	1 Pcs
Sub-packaging EAN barcode	8015747284424

Part number

CX 01 YAM

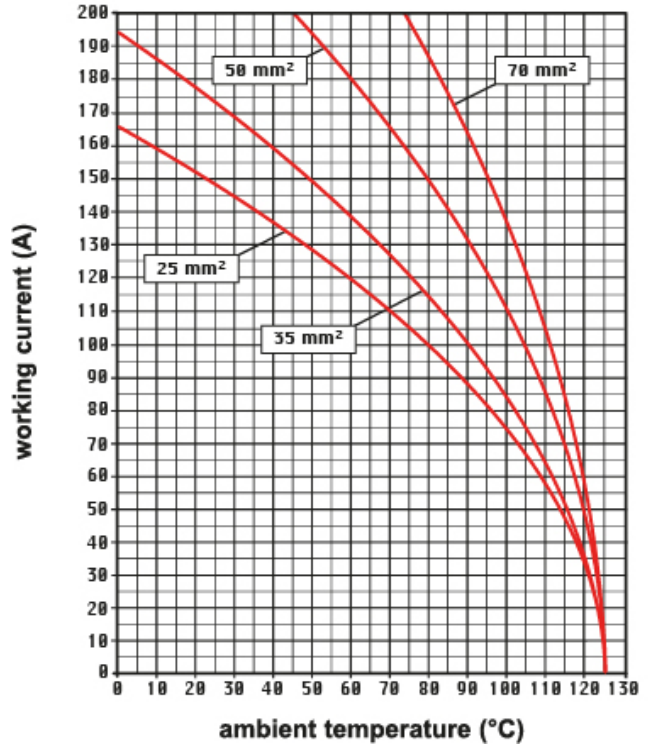


Catalogue drawings



Derating curves

CX 01 YA, 1 pole connector inserts (MIXO 200A)
Maximum current load derating diagram



Notes

Standard modular inserts:

-in combination with standard contacts and standard frames (CX ... TF/TM); must be mounted either in traditional enclosures or in COB panel supports (both up to 500 matings).

Dimensions shown in mm are not binding and may be changed without notice.

California Proposition 65 Information



WARNING

This product can expose you to lead and its compounds, known to the State of California to cause cancer and/or reproductive toxicity. For more information go to www.P65Warnings.ca.gov.