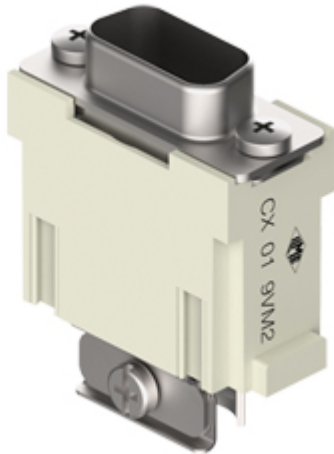


Part number

CX 01 9VM2



Male modular insert, Mixo Data series, D-SUB, 9 poles, 1 module, 5 A 50 V 0,8 kV 3, crimp, shielded, 2 cable entries

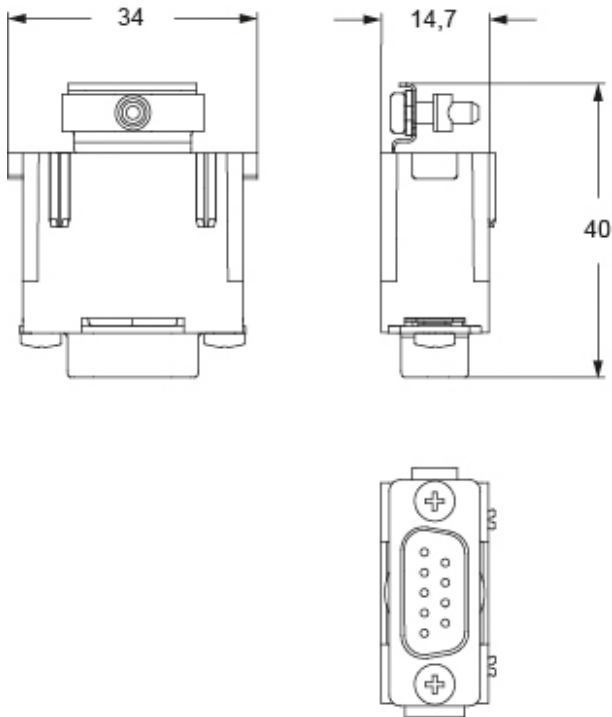
Product description		Material properties	
Product type	Modular insert	Main material	Polycarbonate (PC)
Series	Mixo Data	Colour	RAL 7032 grey
Connection type	D-SUB	RoHs conformity	Compliant
Gender	Male	China RoHs - EFUP	E
N. of poles	9 poles	REACH SVHC substances	No
Size	1 module	General ordering information	
Specification	2 cable entries Crimp, shielded	EAN13 code	8015747271721
Technical data		eCl@ss 8.1	27440205
Current	5 A	ETIM 7.0	EC000438
Voltage	50 V	Packaging Information	
Rated impulse withstand voltage	0,8 kV	Packaging length	112,00 mm
Pollution degree	3	Packaging height	95,00 mm
IP degree of protection	IP20 without enclosure, IP65/IP66/IP68/IP69 with enclosure	Packaging width	117,00 mm
Further technical details		Packaging weight	0,23 kg
Characteristics according to EN 61984	5 A 50 V 0,8 kV 3	Packaging volume	1,24 dm ³
Weight	18,50 g	Packaging description	Carton box
Operating temperature range (min, max)	-40°C...+70°C	Packaging quantity	10 Pcs
		Packaging EAN code	8015747271738
		Sub-packaging weight	0,02 kg
		Sub-packaging description	Plastic bag
		Sub-packaging quantity	1 Pcs
		Sub-packaging EAN barcode	8015747271745

Part number

CX 01 9VM2



Catalogue drawings



Notes

Standard modular inserts:

-in combination with standard contacts and standard frames (CX ... TF/TM); must be mounted either in traditional enclosures or in COB panel supports (both up to 500 matings).

Dimensions shown in mm are not binding and may be changed without notice.

California Proposition 65 Information



WARNING

This product can expose you to lead and its compounds, known to the State of California to cause cancer and/or reproductive toxicity. For more information go to www.P65Warnings.ca.gov.