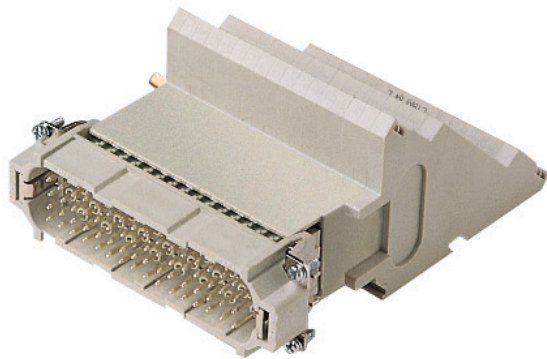



Part number

# CTSM 64 L



Male insert, CTS series, spring terminal connection, 64 poles + PE, 10 A 250 V 4 kV 3, size "104.27", with incorporated terminal block, left side mounting

## Product description

|                        |   |
|------------------------|---|
| <b>Product type</b>    | Insert  |
| <b>Series</b>          | CTS   |
| <b>Connection type</b> | Spring terminal connection  |
| <b>Gender</b>          | Male  |
| <b>N. of poles</b>     | 64 poles +  |
| <b>Size</b>            | Size 104.27   |
| <b>Specification</b>   | Left side mounting<br>With incorporated terminal block  |

## Technical data

|  |  |
|--|--|
| <b>Current</b>                           | 10 A   |
| <b>Voltage</b>                           | 250 V  |
| <b>Rated impulse withstand voltage</b>   | 4 kV   |
| <b>Pollution degree</b>                  | 3  |
| <b>Rated voltage according to UL/CSA</b> | 600 V  |
| <b>Wire cross-section</b>                | 0,14 mm <sup>2</sup> - 2,50 mm <sup>2</sup>      |
| <b>AWG size</b>                          | 26 - 14  |
| <b>Contact type</b>                      | Turned silver plated                             |
| <b>IP degree of protection</b>           | IP20 without enclosure, IP66/IP69 with enclosure |

## Further technical details

|   |                                    |
|---|------------------------------------|
| <b>Characteristics according to EN 61984</b>  | 10A 250V 4kV 3; 10A 230/400V 4kV 2 |
| <b>Mating cycles</b>                          | ≥ 500                              |
| <b>Insulation resistance</b>                  | ≥ 10 GΩ                            |
| <b>Contact resistance</b>                     | ≤ 4 mΩ                             |
| <b>Weight</b>                                 | 465,50 g                           |
| <b>Operating temperature range (min, max)</b> | -40 °C ... +125 °C                 |
| <b>UL 94 flammability rating</b>              | V-0                                |

## Material properties

|                              |  |
|------------------------------|--|
| <b>Main material</b>         | Polycarbonate (PC)   |
| <b>Other materials</b>       | Contacts: copper alloy   |
| <b>Colour</b>                | RAL 7032 grey  |
| <b>RoHs conformity</b>       | Compliant with exemption 6(c): copper alloy containing up to 4% lead by weight |
| <b>China RoHs - EFUP</b>     | 50   |
| <b>REACH SVHC substances</b> | Yes<br>Lead  |
| <b>SCIP number</b>           | 1a9c93ff-0445-4a16-81e3-1609ac5274d6   |

## Approvals / Standards

|                           |                         |
|---------------------------|-------------------------|
| <b>Reference standard</b> | EN 61984:2009-06        |
| <b>Certifications</b>     | CSAc, CQC, DNV, BV, EAC |
| <b>UL</b>                 | ECB22                   |

## General ordering information

|                   |               |
|-------------------|---------------|
| <b>EAN13 code</b> | 8015747041607 |
| <b>eCl@ss 8.1</b> | 27440205      |
| <b>ETIM 7.0</b>   | EC000438      |

## Packaging Information

|                                  |                      |
|----------------------------------|----------------------|
| <b>Sub-packaging length</b>      | 145,00 mm            |
| <b>Sub-packaging height</b>      | 89,00 mm             |
| <b>Sub-packaging width</b>       | 120,00 mm            |
| <b>Sub-packaging weight</b>      | 0,47 kg              |
| <b>Sub-packaging volume</b>      | 1,55 dm <sup>3</sup> |
| <b>Sub-packaging description</b> | Carton box           |
| <b>Sub-packaging quantity</b>    | 1 Pcs                |
| <b>Sub-packaging EAN barcode</b> | 8015747041614        |

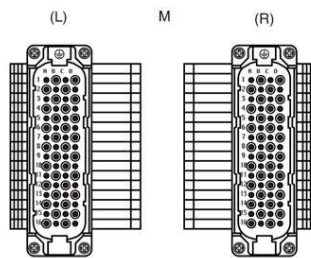
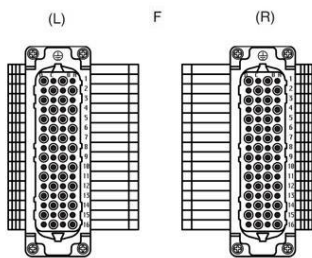
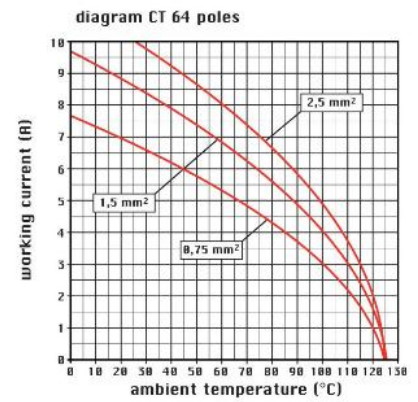
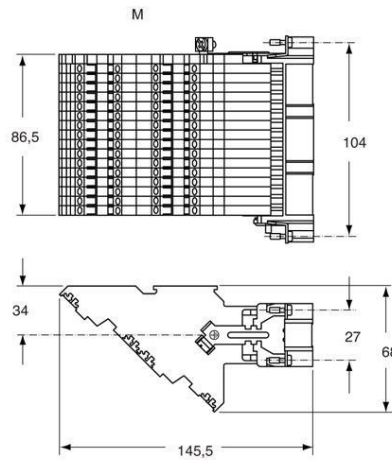
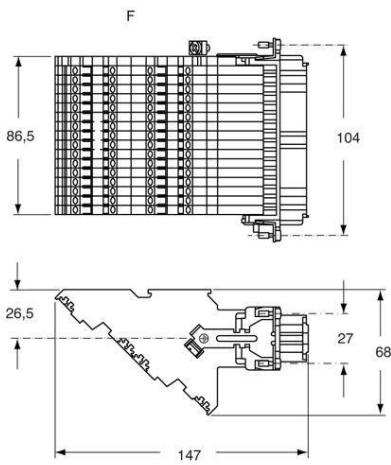
Part number

# CTSM 64 L



Catalogue drawings

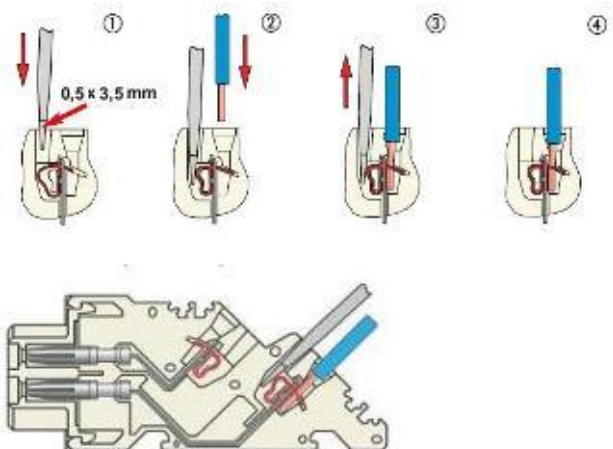
Catalogue drawings



## Notes

Dimensions shown in mm are not binding and may be changed without notice.

Spring terminal connection.



**California Proposition 65 Information**



**WARNING**

This product can expose you to lead and its compounds, known to the State of California to cause cancer and/or reproductive toxicity. For more information go to [www.P65Warnings.ca.gov](http://www.P65Warnings.ca.gov).

---

**California Proposition 65 Information**



**WARNING**

This product can expose you to lead and its compounds, known to the State of California to cause cancer and/or reproductive toxicity. For more information go to [www.P65Warnings.ca.gov](http://www.P65Warnings.ca.gov).

---