

Part number

# CRS 21



Cable clamp, Pg21, for diameter 18 mm, with gasket and washers

| Product description                           |   | Material properties                 |  |
|---|---|-------------------------------------|--|
| <b>Product type</b>                           | Cable clamp                                   | <b>Main material</b>                | Aluminium                                    |
| <b>Cable entry</b>                            | Pg21  | <b>Other materials</b>              | Washers: zinc-plated steel<br>Gasket: rubber |
| <b>Specification</b>                          | For diameter 18 mm<br>With gasket and washers | <b>General ordering information</b> |  |
| <b>Technical data</b>                         |   | <b>EAN13 code</b>                   | 8015747039307                                |
| <b>IP degree of protection</b>                | IP65  | <b>Packaging Information</b>        |  |
| <b>Further technical details</b>              |   | <b>Packaging length</b>             | 160,00 mm                                    |
| <b>Weight</b>                                 | 51,00 g                                       | <b>Packaging height</b>             | 115,00 mm                                    |
| <b>Operating temperature range (min, max)</b> | -40°C...+125°C                                | <b>Packaging width</b>              | 137,00 mm                                    |
|   |   | <b>Packaging weight</b>             | 0,60 kg                                      |
|   |   | <b>Packaging volume</b>             | 2,52 dm <sup>3</sup>                         |
|   |   | <b>Packaging description</b>        | Carton box                                   |
|   |   | <b>Packaging quantity</b>           | 10 Pcs                                       |
|   |   | <b>Packaging EAN code</b>           | 8015747204118                                |
|   |   | <b>Sub-packaging weight</b>         | 0,06 kg                                      |
|   |   | <b>Sub-packaging description</b>    | Plastic bag                                  |
|   |   | <b>Sub-packaging quantity</b>       | 1 Pcs  |
|   |   | <b>Sub-packaging EAN barcode</b>    | 8015747204125                                |

Part number

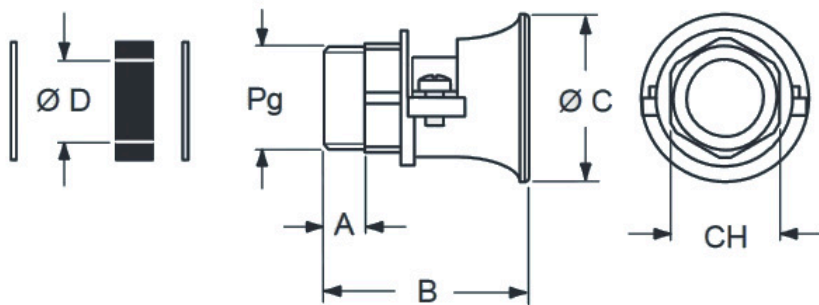
# CRS 21



Catalogue drawings

dimensions in mm

## CRS



| CRS  | A    | B    | Ø C | Ø D | CH |
|------|------|------|-----|-----|----|
| 13,5 | 7    | 36   | 28  | 12  | 22 |
| 16   | 8,5  | 41   | 32  | 14  | 24 |
| 21   | 10   | 47   | 39  | 18  | 30 |
| 29   | 10,5 | 58   | 55  | 25  | 41 |
| 36   | 13   | 67,5 | 67  | 32  | 50 |
| 42   | 13   | 72,5 | 75  | 38  | 55 |

## Notes

Dimensions shown in mm are not binding and may be changed without notice.