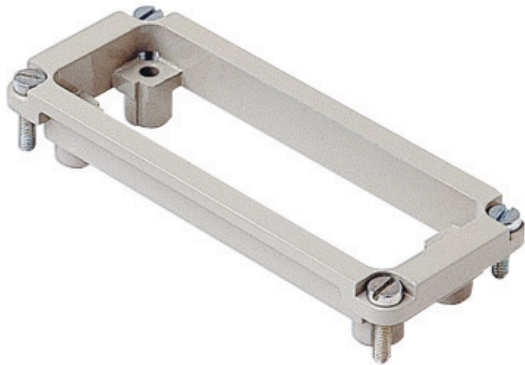


Part number

# CR 25/16



Adapter plate, for inserts with 66 x 16 mm  
screw fixing centre distance

#### Product description

<b>Product type</b>	Adapter plate
<b>Specification</b>	For inserts with 66 x 16 mm screw fixing centre distance

#### Further technical details

<b>Weight</b>	9,00 g
---------------	--------

#### Material properties

<b>RoHs conformity</b>	Compliant with exemption 6(c): copper alloy containing up to 4% lead by weight
<b>China RoHs - EFUP</b>	50
<b>REACH SVHC substances</b>	Yes Lead
<b>SCIP number</b>	14801d82-17fa-4265-94a7-0d37e0c4dc5e

#### General ordering information

<b>EAN13 code</b>	8015747037761
<b>eCl@ss 8.1</b>	27440201
<b>ETIM 7.0</b>	EC002309

#### Packaging Information

<b>Sub-packaging weight</b>	0,09 kg
<b>Sub-packaging description</b>	Plastic bag
<b>Sub-packaging quantity</b>	10 Pcs
<b>Sub-packaging EAN barcode</b>	8015747037778

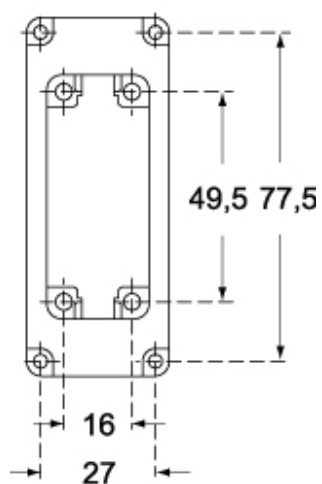
Part number

# CR 25/16

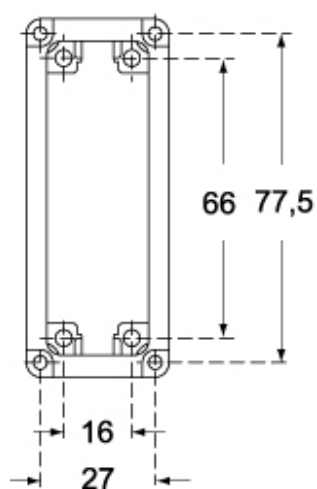


Catalogue drawings

**CR 15/16**



**CR 25/16**



## Notes

Dimensions shown in mm are not binding and may be changed without notice.