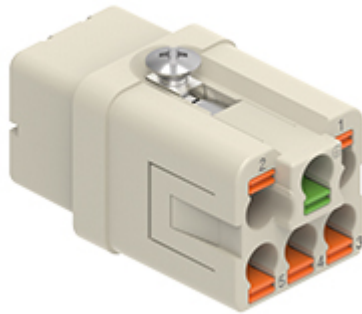



Part number
CQYF 05



Female insert, CQY series, AXYR® spring push-in terminal connection without tools, 5 poles + PE, 16 A 230/400 V 4 kV 3, size "21.21"

Product description	
Product type	Insert
Series	CQY
Connection type	AXYR® high density spring terminal connection without tools
Gender	Female
N. of poles	5 poles + 
Size	Size "21.21"
Technical data	
Current	16 A
Voltage	230 - 400 V
Rated impulse withstand voltage	4 kV
Pollution degree	3
Rated voltage according to UL/CSA	600 V
Wire cross-section	0,25 mm ² - 4,00 mm ²
AWG size	24 - 14
Contact type	Turned silver plated
IP degree of protection	IP20 without enclosure, IP44/IP66/IP67/IP68/IP69 with enclosure
Further technical details	
Characteristics according to EN 61984	16 A 230/400 V 4 kV 3; 16 A 320/500V 4 kV 2
Mating cycles	≥ 500
Insulation resistance	≥ 10 GΩ
Contact resistance	≤ 3 mΩ
Weight	21,50 g
Operating temperature range (min, max)	-40 °C ... +125 °C
Conductors stripping length	9...11 mm
UL 94 flammability rating	V-0

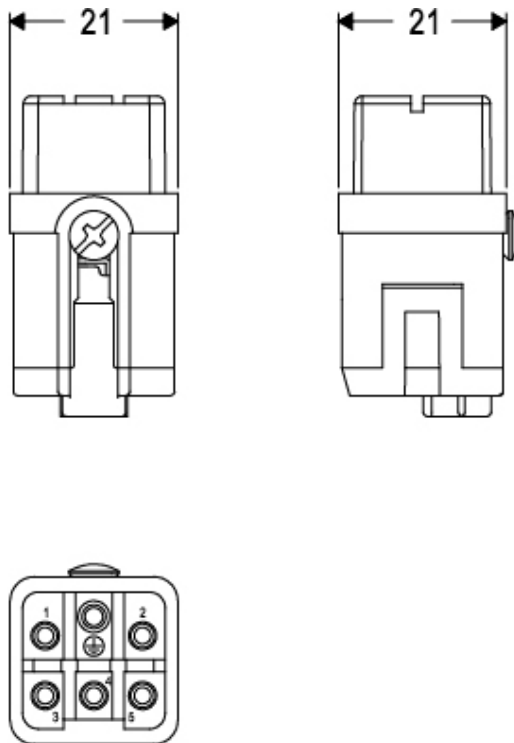
Material properties	
Main material	Polycarbonate (PC)
Other materials	Contacts: copper alloy
Colour	RAL 7032 grey
RoHs conformity	Compliant with exemption 6(c): copper alloy containing up to 4% lead by weight
China RoHs - EFUP	50
REACH SVHC substances	Yes Lead
Approvals / Standards	
Certifications	DNV
General ordering information	
EAN13 code	8015747284677
eCl@ss 8.1	27440205
ETIM 7.0	EC000438
Packaging Information	
Packaging length	280,00 mm
Packaging height	170,00 mm
Packaging width	185,00 mm
Packaging weight	2,54 kg
Packaging volume	8,81 dm ³
Packaging description	Carton box
Packaging quantity	100 Pcs
Packaging EAN code	8015747183406
Sub-packaging weight	0,03 kg
Sub-packaging description	Plastic bag
Sub-packaging quantity	1 Pcs
Sub-packaging EAN barcode	8015747284691

Part number

CQYF 05

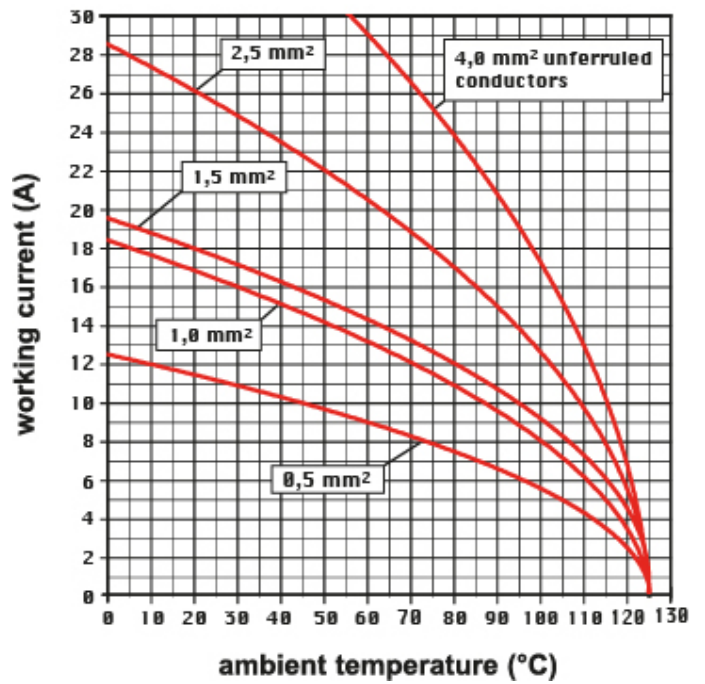


Catalogue drawings



Derating curves

CQY 5 poles connector inserts Maximum current load derating diagram



Notes

Dimensions shown in mm are not binding and may be changed without notice.

inserts for wires with the following cross-sectional areas:

0,25 - 4 mm² (24 - 12 AWG)

for prepared wires useable section:

0,25 - 2,5 mm² (24 - 14 AWG)