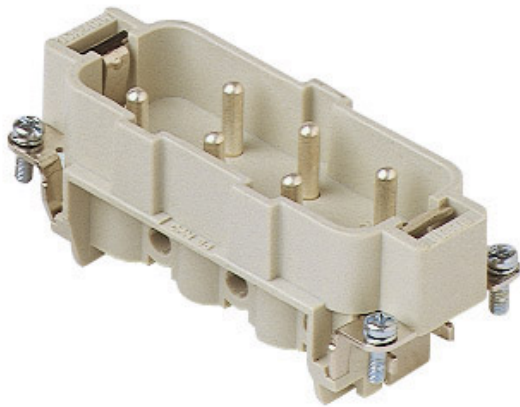



Part number

# CPM 06 X



Male insert, CP series, screw terminal connection, 6 poles + PE, 35 A 400/690 V 6 kV 3, size "77.27", without plate

Product description		Material properties	
<b>Product type</b>	Insert	<b>Main material</b>	Polycarbonate (PC)
<b>Series</b>	CP	<b>Other materials</b>	Contacts: copper alloy
<b>Connection type</b>	Screw terminal connection	<b>Colour</b>	RAL 7032 grey
<b>Gender</b>	Male		Compliant with exemption 6(c): copper alloy containing up to 4% lead by weight
<b>N. of poles</b>	6 poles + 	<b>RoHs conformity</b>	
<b>Size</b>	Size 77.27	<b>China RoHs - EFUP</b>	50
<b>Specification</b>	Without plate, for prepared conductors	<b>REACH SVHC substances</b>	Yes Lead
Technical data		<b>SCIP number</b>	1a9c93ff-0445-4a16-81e3-1609ac5274d6
<b>Current</b>	35 A	Approvals / Standards	
<b>Voltage</b>	400 - 690 V	<b>Reference standard</b>	EN 61984:2009-06
<b>Rated impulse withstand voltage</b>	6 kV	<b>Certifications</b>	CSA, CQC, DNV, BV, EAC
<b>Pollution degree</b>	3	<b>UL</b>	ECBT2
<b>Rated voltage according to UL/CSA</b>	600 V	General ordering information	
<b>Wire cross-section</b>	0,75 mm <sup>2</sup> - 6,00 mm <sup>2</sup>	<b>EAN13 code</b>	8015747213424
<b>AWG size</b>	18 - 10	Packaging Information	
<b>Contact type</b>	Turned silver plated	<b>Packaging length</b>	230,00 mm
<b>IP degree of protection</b>	IP20 without enclosure, IP65/IP66/IP68/IP69 with enclosure	<b>Packaging height</b>	110,00 mm
Further technical details		<b>Packaging width</b>	180,00 mm
<b>Mating cycles</b>	≥ 500	<b>Packaging weight</b>	1,89 kg
<b>Insulation resistance</b>	≥ 10 GΩ	<b>Packaging volume</b>	4,55 dm <sup>3</sup>
<b>Contact resistance</b>	≤ 0,5 mΩ	<b>Packaging description</b>	Carton box
<b>Weight</b>	81,50 g	<b>Packaging quantity</b>	20 Pcs
<b>Operating temperature range (min, max)</b>	-40 °C ... +125 °C	<b>Packaging EAN code</b>	8015747213455
<b>UL 94 flammability rating</b>	V-0	<b>Sub-packaging length</b>	87,00 mm
<b>Torque for main contact</b>	M4: 1,2 Nm; 10,6 lb.in (Ph1 or 0,8 x 4 mm)	<b>Sub-packaging height</b>	36,00 mm
		<b>Sub-packaging width</b>	180,00 mm
		<b>Sub-packaging weight</b>	0,47 kg
		<b>Sub-packaging volume</b>	0,56 dm <sup>3</sup>
		<b>Sub-packaging description</b>	Carton tray
		<b>Sub-packaging quantity</b>	5 Pcs
		<b>Sub-packaging EAN barcode</b>	8015747213462

Part number

# CPM 06 X



## Notes

CPF/M 06 X inserts

- characteristics according to EN 61984:  
35A 400/690V 6kV 3
- UL, CSA, CCC, GOST certified
- rated voltage according to UL/CSA: 600V
- insulation resistance: > 10 GOhm
- ambient temperature limit: -40 °C ... +125 °C
- are made of self-extinguishing thermoplastic resin UL 94 V0
- mechanical life: > 500 cycles
- contact resistance: < 0,5 mOhm
- inserts without plate, for section conductors:  
0.75 ÷ 6 mm<sup>2</sup> - AWG 18 ÷ 10
- conductors stripping length: 10.5 mm
- terminal screw torque: 1.2 Nm
- enclosures: size 77.27:  
C-TYPE IP65/IP66  
C7 IP67 stainless steel lever  
V-TYPE IP65/IP66 stainless steel lever  
T-TYPE IP65 insulating  
JEI zinc-plated steel lever  
BIG hoods  
W-TYPE aggressive environments  
EMC  
central lever  
IP68
- panel supports: COB

Dimensions shown in mm are not binding and may be changed without notice.

### California Proposition 65 Information



#### WARNING

This product can expose you to lead and its compounds, known to the State of California to cause cancer and/or reproductive toxicity. For more information go to [www.P65Warnings.ca.gov](http://www.P65Warnings.ca.gov).

### California Proposition 65 Information



#### WARNING

This product can expose you to lead and its compounds, known to the State of California to cause cancer and/or reproductive toxicity. For more information go to [www.P65Warnings.ca.gov](http://www.P65Warnings.ca.gov).