

Part number

# CPF 06 N



Female insert, CP series, screw terminal connection, 6 poles + PE, 35 A 400/690 V 6 kV 3, size "77.62", black colour, with plate

#### Product description

<b>Product type</b>	Insert
<b>Series</b>	CP
<b>Connection type</b>	Screw terminal connection
<b>Gender</b>	Female
<b>N. of poles</b>	12 poles +
<b>Size</b>	Size 77.62
<b>Specification</b>	Black colour With plate, also for non-prepared conductors

#### Technical data

<b>Current</b>	35 A
<b>Voltage</b>	400 - 690 V
<b>Rated impulse withstand voltage</b>	6 kV
<b>Pollution degree</b>	3
<b>Rated voltage according to UL/CSA</b>	600 V
<b>Wire cross-section</b>	0,75 mm <sup>2</sup> - 6,00 mm <sup>2</sup>
<b>AWG size</b>	18 - 10
<b>Contact type</b>	Turned silver plated
<b>IP degree of protection</b>	IP20 without enclosure, IP65/IP66 with enclosure

#### Further technical details

<b>Characteristics according to EN 61984</b>	35A 400/690V 6kV 3
<b>Mating cycles</b>	≥ 500
<b>Insulation resistance</b>	≥ 10 GΩ
<b>Contact resistance</b>	≤ 0,5 mΩ
<b>Weight</b>	85,30 g
<b>Operating temperature range (min, max)</b>	-40 °C ... +125 °C
<b>UL 94 flammability rating</b>	V-0
<b>Torque for main contact</b>	M4: 1,2 Nm; 10,6 lb.in (Ph1 or 0,8 x 4 mm)

#### Material properties

<b>Main material</b>	Polycarbonate (PC)
<b>Other materials</b>	Contacts: copper alloy
<b>Colour</b>	RAL 9005 black
<b>RoHs conformity</b>	Compliant with exemption 6(c): copper alloy containing up to 4% lead by weight
<b>China RoHs - EFUP</b>	50
<b>REACH SVHC substances</b>	Yes Lead
<b>SCIP number</b>	1a9c93ff-0445-4a16-81e3-1609ac5274d6

#### Approvals / Standards

<b>Reference standard</b>	EN 61984:2009-06
<b>Certifications</b>	CSA, CQC, DNV, BV, EAC
<b>UL</b>	ECBT2

#### General ordering information

<b>EAN13 code</b>	8015747036818
<b>eCl@ss 8.1</b>	27440205
<b>ETIM 7.0</b>	EC000438

#### Packaging Information

<b>Packaging length</b>	210,00 mm
<b>Packaging height</b>	200,00 mm
<b>Packaging width</b>	130,00 mm
<b>Packaging weight</b>	1,92 kg
<b>Packaging volume</b>	5,46 dm <sup>3</sup>
<b>Packaging description</b>	Carton box
<b>Packaging quantity</b>	20 Pcs
<b>Packaging EAN code</b>	8015747261630
<b>Sub-packaging length</b>	87,00 mm
<b>Sub-packaging height</b>	36,00 mm
<b>Sub-packaging width</b>	180,00 mm
<b>Sub-packaging weight</b>	0,48 kg
<b>Sub-packaging volume</b>	0,56 dm <sup>3</sup>
<b>Sub-packaging description</b>	Carton tray
<b>Sub-packaging quantity</b>	5 Pcs
<b>Sub-packaging EAN barcode</b>	8015747036825

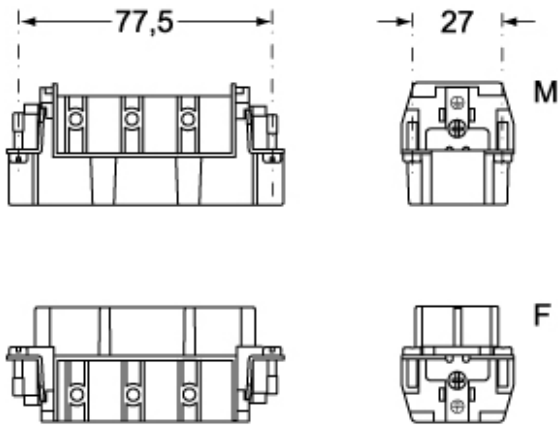
Part number

# CPF 06 N

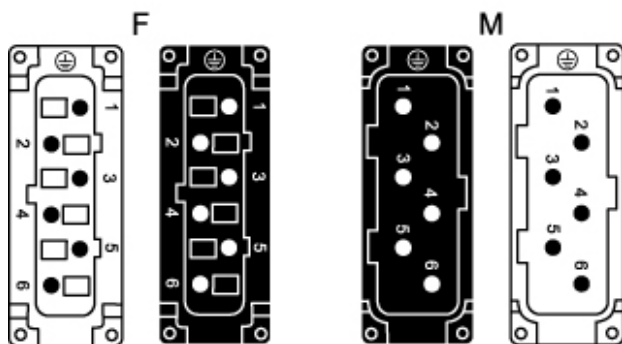


Catalogue drawings

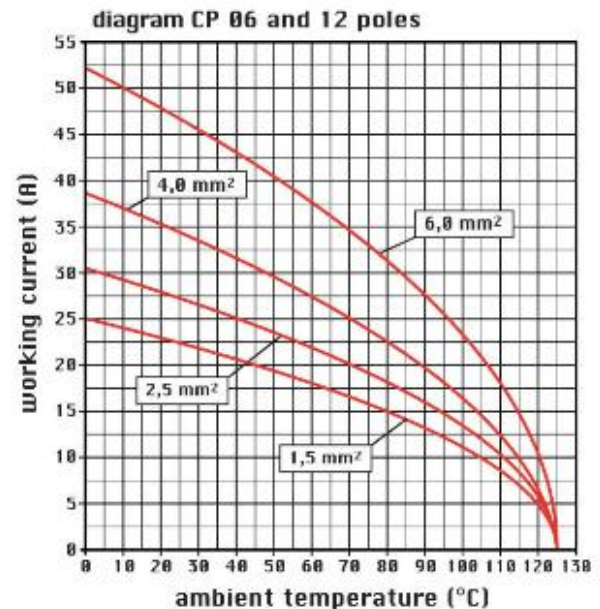
## CPM 06 (N)



## CPF 06 (N)



Catalogue drawings



## Notes

CPF/M 06 N inserts

- characteristics according to EN 61984: 35A 400/690V 6kV 3
- UL, CSA, CCC, GOST certified
- rated voltage according to UL/CSA: 600V
- insulation resistance: > 10 GOhm
- ambient temperature limit: -40 °C ... +125 °C
- are made of self-extinguishing thermoplastic resin UL 94 V0
- mechanical life: > 500 cycles
- contact resistance: < 0,5 mOhm
- inserts with plate, for section conductors: 0.75 ÷ 6 mm<sup>2</sup> - AWG 18 ÷ 10
- conductors stripping length: 10.5 mm
- terminal screw torque: 1.2 Nm
- enclosures: size 77.27:
- C-TYPE IP65/IP66
- C7 IP67 stainless steel lever
- V-TYPE IP65/IP66 stainless steel lever
- T-TYPE IP65 insulating

- JEl zinc-plated steel lever
- BIG hoods
- W-TYPE aggressive environments
- EMC
- central lever
- IP68
- panel supports: COB

Dimensions shown in mm are not binding and may be changed without notice.

**California Proposition 65 Information**



**WARNING**

This product can expose you to lead and its compounds, known to the State of California to cause cancer and/or reproductive toxicity. For more information go to [www.P65Warnings.ca.gov](http://www.P65Warnings.ca.gov).

---

**California Proposition 65 Information**



**WARNING**

This product can expose you to lead and its compounds, known to the State of California to cause cancer and/or reproductive toxicity. For more information go to [www.P65Warnings.ca.gov](http://www.P65Warnings.ca.gov).

---