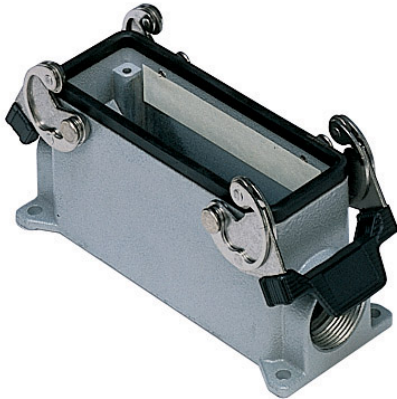


Part number

CMAP 16.21



Surface mounting housing, 830V series, with 2 levers, Pg21 cable entry, size "104.27", high construction



Product description		Material properties	
Product type	Surface mounting housing	Colour	RAL 7040 grey
Series	830V	RoHs conformity	Compliant
Closing type	With 2 levers	China RoHs - EFUP	E
Size	Size 104.27	REACH SVHC substances	No
Cable entry	With cable entry Pg21	Approvals / Standards	
Specification	High construction	Certifications	DNV, BV
Technical data		UL	ECBT2
IP degree of protection	IP65 / IP66 / IP69	cUL	ECBT8
Further technical details		General ordering information	
Weight	500,00 g	EAN13 code	8015747029568
Operating temperature range (min, max)	-40°C...+125°C	Packaging Information	
		Packaging length	475,00 mm
		Packaging height	220,00 mm
		Packaging width	200,00 mm
		Packaging weight	5,00 kg
		Packaging volume	20,90 dm ³
		Packaging description	Carton box
		Packaging quantity	10 Pcs
		Packaging EAN code	8015747259224
		Sub-packaging weight	2,50 kg
		Sub-packaging description	Plastic packaging
		Sub-packaging quantity	5 Pcs
		Sub-packaging EAN barcode	8015747029575

Part number

CMAP 16.21



Catalogue drawings

CMP CMAP - MMP MMAP



CMP CS/CP CMAP CS/CP - MMP CS/CP MMAP CS/CP



	A
CMP / MMP	63
CMAP / MMAP	80
CMP CS / MMP CS	63
CMAP CS / MMAP CS	80
CMP CP / MMP CP	63
CMAP CP / MMAP CP	80

Notes

Dimensions shown in mm are not binding and may be changed without notice.