

Part number

# CKX 03 IAP



Angled Bulkhead mounting housing, CK series, with 1 lever, size "21.21", with cable gland

#### Product description

<b>Product type</b>	Angled bulkhead mounting housing
<b>Series</b>	CK
<b>Closing type</b>	With 1 lever
<b>Size</b>	Size "21.21"
<b>Cable entry</b>	Without cable entry
<b>Specification</b>	With cable gland

#### Further technical details

<b>Weight</b>	34,00 g
<b>Operating temperature range (min, max)</b>	-40°C...+125°C

#### Material properties

<b>Other materials</b>	Lever: Stainless steel Gasket: TPE
<b>Colour</b>	RAL 7035 grey
<b>RoHs conformity</b>	Compliant
<b>China RoHs - EFUP</b>	E
<b>REACH SVHC substances</b>	No

#### Approvals / Standards

<b>UL</b>	ECBT2
<b>cUL</b>	ECBT8

#### General ordering information

<b>EAN13 code</b>	8015747028493
-------------------	---------------

#### Packaging Information

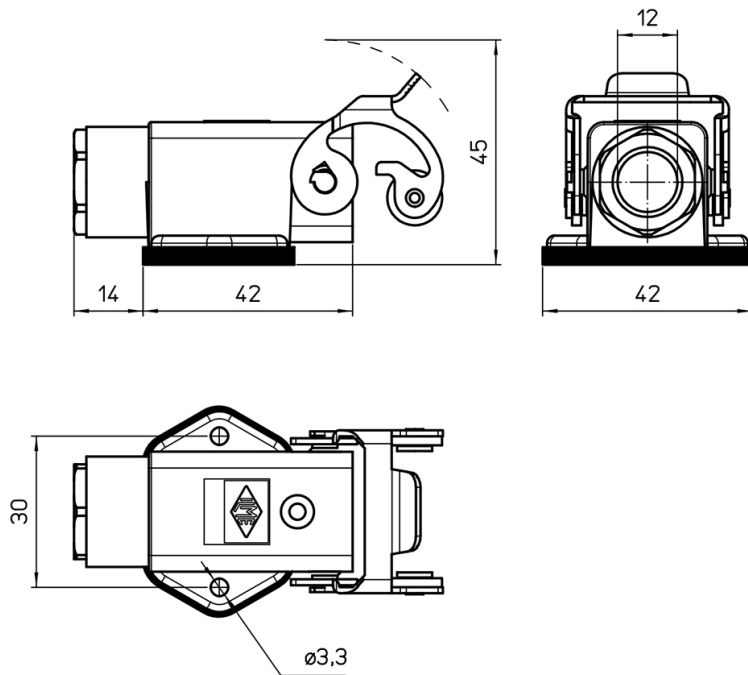
<b>Packaging length</b>	360,00 mm
<b>Packaging height</b>	165,00 mm
<b>Packaging width</b>	315,00 mm
<b>Packaging weight</b>	3,40 kg
<b>Packaging volume</b>	18,71 dm <sup>3</sup>
<b>Packaging description</b>	Carton box
<b>Packaging quantity</b>	100 Pcs
<b>Packaging EAN code</b>	8015747028509
<b>Sub-packaging weight</b>	0,34 kg
<b>Sub-packaging description</b>	Carton box
<b>Sub-packaging quantity</b>	10 Pcs
<b>Sub-packaging EAN barcode</b>	8015747028516

Part number

# CKX 03 IAP

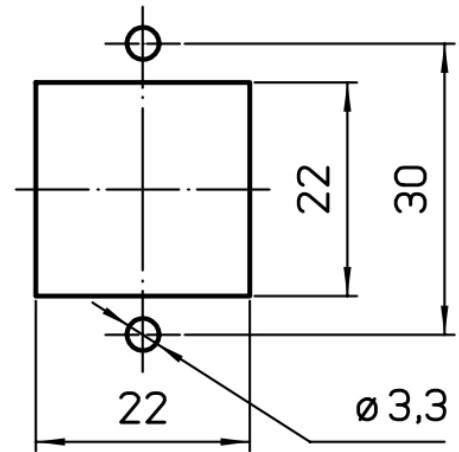


Catalogue drawings



Catalogue drawings

## Panel cut-out



## Notes

Dimensions shown in mm are not binding and may be changed without notice.