

Part number

# CHPXW 50.21



Surface mounting housing, W-TYPE series,  
with 2 levers, Pg21 cable entry, size "66.40"

#### Product description

<b>Product type</b>	Surface mounting housing
<b>Series</b>	W-TYPE
<b>Closing type</b>	With 2 levers
<b>Size</b>	Size "66.40"
<b>Cable entry</b>	With cable entry Pg21

#### Technical data

<b>IP degree of protection</b>	IP65 / IP66 / IP69
--------------------------------	--------------------

#### Further technical details

<b>Operating temperature range (min, max)</b>	-40°C...+125°C
---	----------------

#### Material properties

<b>Other materials</b>	Lever: Stainless steel, polyamide (PA)
<b>Colour</b>	RAL 9005 black
<b>RoHs conformity</b>	Compliant
<b>China RoHs - EFUP</b>	E
<b>REACH SVHC substances</b>	No

#### Approvals / Standards

<b>Certifications</b>	DNV, BV
<b>UL</b>	ECBT2
<b>cUL</b>	ECBT8

#### General ordering information

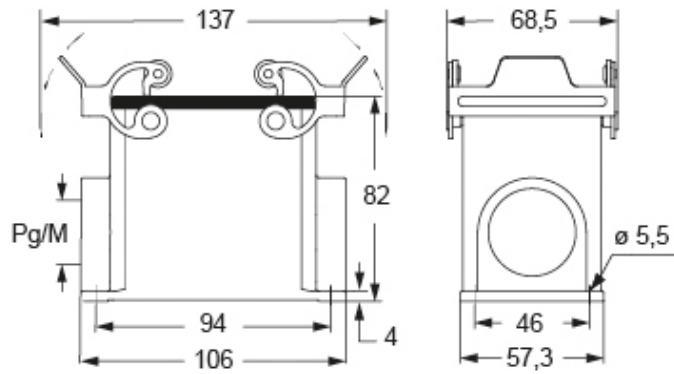
<b>EAN13 code</b>	8015747276337
-------------------	---------------

Part number

# CHPXW 50.21



## Catalogue drawings



## Notes

Dimensions shown in mm are not binding and may be changed without notice.