

Part number

CHPX 32 LP



Surface mounting housing, C-TYPE series, with 1 lever, Pg36 cable entry, size "77.62", with plastic cover

Product description

Product type	Surface mounting housing
Series	C-TYPE
Closing type	With 1 lever
Size	Size 77.62
Cable entry	With cable entry Pg36
Specification	With plastic cover

Technical data

IP degree of protection	IP65
--------------------------------	------

Further technical details

Weight	774,00 g
Operating temperature range (min, max)	-40°C...+125°C

Material properties

Other materials	Lever: Stainless steel Gasket: NBR
Colour	RAL 7040 grey
RoHs conformity	Compliant
China RoHs - EFUP	E
REACH SVHC substances	No

Approvals / Standards

Certifications	DNV, BV
UL	ECBT2
cUL	ECBT8

General ordering information

EAN13 code	8015747267731
-------------------	---------------

Packaging Information

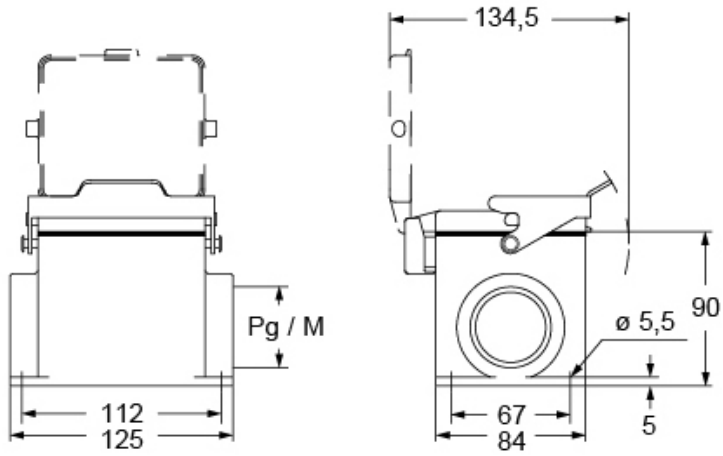
Packaging length	250,00 mm
Packaging height	145,00 mm
Packaging width	300,00 mm
Packaging weight	3,10 kg
Packaging volume	10,88 dm ³
Packaging description	Carton box
Packaging quantity	4 Pcs
Packaging EAN code	8015747268608
Sub-packaging weight	0,78 kg
Sub-packaging description	Plastic packaging
Sub-packaging quantity	1 Pcs
Sub-packaging EAN barcode	8015747268615

Part number

CHPX 32 LP



Catalogue drawings



Notes

Dimensions shown in mm are not binding and may be changed without notice.
