

Part number

# CHPX 32 L



Surface mounting housing, C-TYPE series, with 1 lever, Pg36 cable entry, size "77.62"



#### Product description

<b>Product type</b>	Surface mounting housing
<b>Series</b>	C-TYPE
<b>Closing type</b>	With 1 lever
<b>Size</b>	Size 77.62
<b>Cable entry</b>	With cable entry Pg36

#### Technical data

**IP degree of protection** IP66

#### Further technical details

**Operating temperature range (min, max)** -40°C...+125°C

#### Material properties

<b>Other materials</b>	Lever: Stainless steel Gasket: NBR
<b>Colour</b>	RAL 7040 grey
<b>RoHs conformity</b>	Compliant
<b>China RoHs - EFUP</b>	E
<b>REACH SVHC substances</b>	No

#### Approvals / Standards

<b>Certifications</b>	DNV, BV
<b>UL</b>	ECBT2
<b>cUL</b>	ECBT8

#### General ordering information

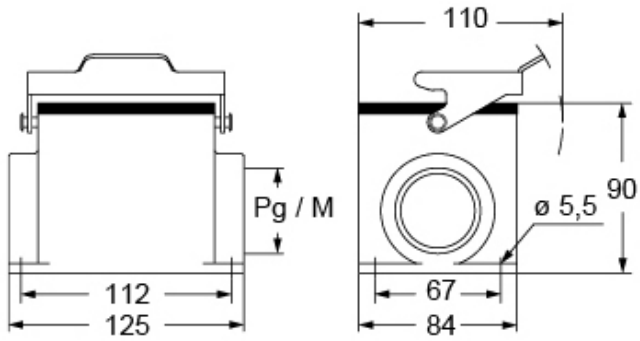
**EAN13 code** 8015747267212

Part number

# CHPX 32 L



Catalogue drawings



## Notes

Dimensions shown in mm are not binding and may be changed without notice.