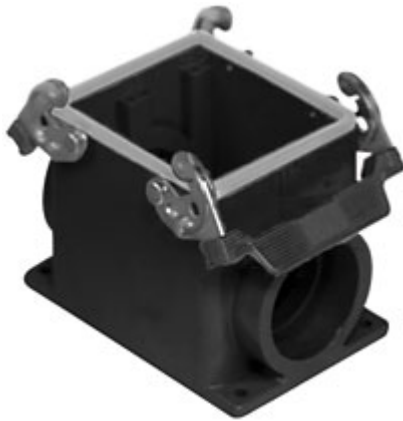


Part number

CHPW 32



Surface mounting housing, W-TYPE series, with 2 levers, Pg36 cable entry, size "77.62"

Product description

Product type	Surface mounting housing
Series	W-TYPE
Closing type	With 2 levers
Size	Size 77.62
Cable entry	With cable entry Pg36

Technical data

IP degree of protection IP65 / IP66 / IP69

Further technical details

Weight	800,00 g
Operating temperature range (min, max)	-40°C...+125°C

Material properties

Other materials	Lever: Stainless steel, polyamide (PA)
Colour	RAL 9005 black
RoHs conformity	Compliant
China RoHs - EFUP	E
REACH SVHC substances	No

Approvals / Standards

Certifications	DNV, BV
UL	ECBT2
cUL	ECBT8

General ordering information

EAN13 code 8015747175586

Packaging Information

Packaging length	290,00 mm
Packaging height	140,00 mm
Packaging width	215,00 mm
Packaging weight	3,41 kg
Packaging volume	8,73 dm ³
Packaging description	Carton box
Packaging quantity	4 Pcs
Packaging EAN code	8015747225311
Sub-packaging weight	0,85 kg
Sub-packaging description	Plastic packaging
Sub-packaging quantity	1 Pcs
Sub-packaging EAN barcode	8015747175678

Part number

CHPW 32



Notes

Dimensions shown in mm are not binding and may be changed without notice.
