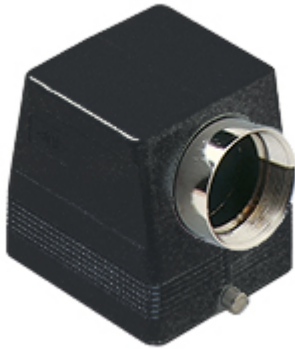


Part number

CHOW 32 L



Hood, W-TYPE series, with 2 pegs, Pg36 side cable entry, size "77.62"

| Product description | | Material properties | |
|---|------------------------------------|-------------------------------------|--|
| Product type | Hood | Other materials | Gasket: FKM |
| Series | W-TYPE | Colour | RAL 9005 black |
| Closing type | With 2 pegs | | Compliant with exemption 6(c): copper alloy containing up to 4% lead by weight |
| Size | Size 77.62 | RoHs conformity | |
| Cable entry | Side cable entry with adapter Pg36 | China RoHs - EFUP | 50 |
| Technical data | | REACH SVHC substances | Yes Lead |
| IP degree of protection | IP65 / IP66 / IP69 | SCIP number | 15deaf78-e939-4401-a0b0-e2228ca32a03 |
| Further technical details | | Approvals / Standards | |
| Weight | 417,70 g | Certifications | DNV, BV |
| Operating temperature range (min, max) | -40°C...+125°C | UL | ECBT2 |
| | | cUL | ECBT8 |
| | | General ordering information | |
| | | EAN13 code | 8015747021319 |
| | | Packaging Information | |
| | | Packaging length | 370,00 mm |
| | | Packaging height | 140,00 mm |
| | | Packaging width | 210,00 mm |
| | | Packaging weight | 3,49 kg |
| | | Packaging volume | 10,88 dm ³ |
| | | Packaging description | Carton box |
| | | Packaging quantity | 8 Pcs |
| | | Packaging EAN code | 8015747021326 |
| | | Sub-packaging weight | 0,44 kg |
| | | Sub-packaging description | Plastic packaging |
| | | Sub-packaging quantity | 1 Pcs |
| | | Sub-packaging EAN barcode | 8015747021333 |

Part number

CHOW 32 L



Notes

Dimensions shown in mm are not binding and may be changed without notice.
