

Part number
CGI 06



Bulkhead mounting housing, IP68 series, for 2 screws, size "44.27"

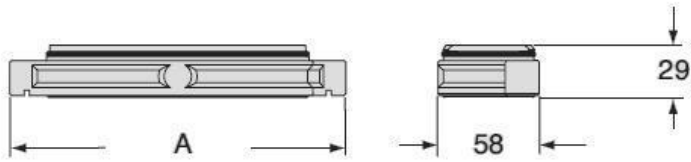
Product description		Material properties	
Product type	Bulkhead mounting housing	Main material	Aluminium die-cast
Series	IP68	Other materials	Gasket: NBR
Closing type	With 2 screws	Colour	RAL 9005 black
Size	Size 44.27	RoHs conformity	Compliant
Cable entry	Without cable entry	China RoHs - EFUP	E
Technical data		REACH SVHC substances	No
IP degree of protection	IP66 / IP68 / IP69	Approvals / Standards	
Further technical details		Certifications	DNV, BV
Weight	154,00 g	UL	ECBT2
Operating temperature range (min, max)	-40°C...+125°C	cUL	ECBT8
		General ordering information	
		EAN13 code	8015747145831
		eCl@ss 8.1	27440202
		ETIM 7.0	EC000437
		Packaging Information	
		Packaging length	230,00 mm
		Packaging height	110,00 mm
		Packaging width	180,00 mm
		Packaging weight	1,60 kg
		Packaging volume	4,55 dm ³
		Packaging description	Carton box
		Packaging quantity	10 Pcs
		Packaging EAN code	8015747299992
		Sub-packaging length	167,00 mm
		Sub-packaging height	21,00 mm
		Sub-packaging width	60,00 mm
		Sub-packaging weight	0,16 kg
		Sub-packaging volume	0,21 dm ³
		Sub-packaging description	Carton tray
		Sub-packaging quantity	1 Pcs
		Sub-packaging EAN barcode	8015747145930

Part number
CGI 06



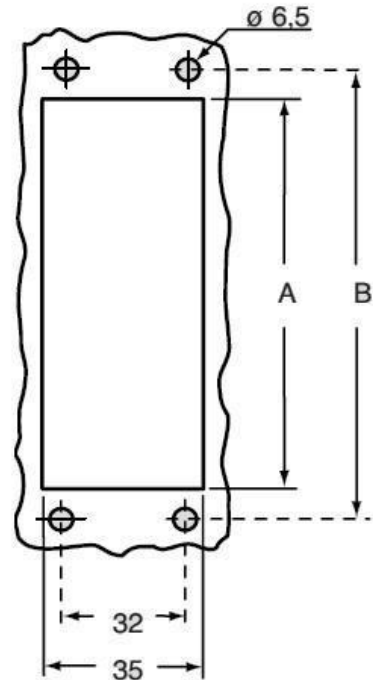
Catalogue drawings

CGI



	A
CGI 06	133
CGI 10	146
CGI 16	166
CGI 24	193

Catalogue drawings



	A	B
CGI 06 B	52	70
CGI 10 B	65	83
CGI 16 B	86	103
CGI 24 B	112	130

Notes

Dimensions shown in mm are not binding and may be changed without notice.