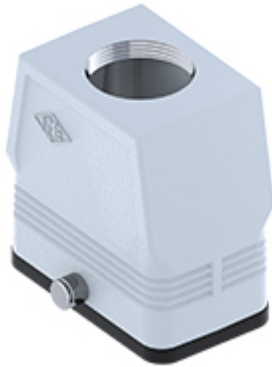


Part number

CFV 10 GYC29



Hood, CENTRAL LEVER series, with 2 pegs, Pg29 top cable entry without adapter, size "57.27", high construction

Product description

Product type	Hood
Series	CENTRAL LEVER
Closing type	With 2 pegs
Size	Size 57.27
Cable entry	Top cable entry Pg29
Specification	High construction

Technical data

IP degree of protection IP65

Further technical details

Weight	0,50 g
Operating temperature range (min, max)	-40°C...+125°C

Material properties

Other materials	Gasket: NBR
Colour	RAL 7040 grey
RoHs conformity	Compliant
China RoHs - EFUP	E
REACH SVHC substances	No

Approvals / Standards

UL	ECBT2
cUL	ECBT8

General ordering information

EAN13 code 8015747266987

Packaging Information

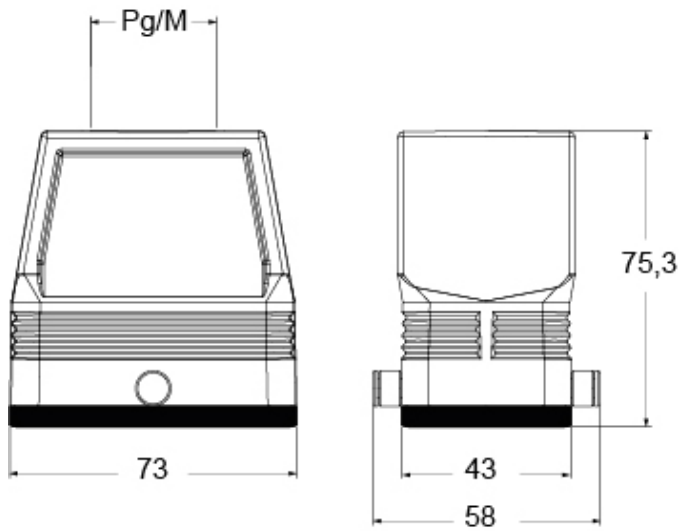
Packaging length	150,00 mm
Packaging height	160,00 mm
Packaging width	300,00 mm
Packaging description	Carton box
Packaging quantity	20 Pcs
Packaging EAN code	8015747044530
Sub-packaging description	Plastic packaging
Sub-packaging quantity	5 Pcs
Sub-packaging EAN barcode	8015747044578

Part number

CFV 10 GYC29



Catalogue drawings



Notes

Dimensions shown in mm are not binding and may be changed without notice.