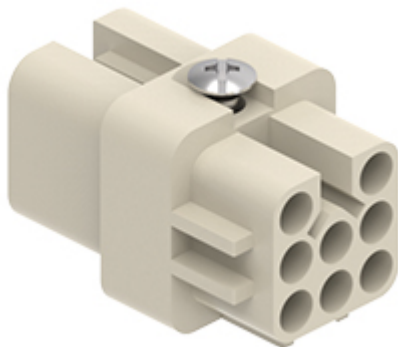


Part number
CDF 07



Female insert, CD series, crimp connection, 7 poles + PE, 10 A 250 V 4 kV 3, size "21.21"

Product description	
Product type	Insert
Series	CD
Connection type	Crimp connection
Gender	Female
N. of poles	7 poles +
Size	Size "21.21"
Specification	Standard & HNM (High Number of Matings)

Technical data	
Current	10 A
Voltage	250 V
Rated impulse withstand voltage	4 kV
Pollution degree	3
Rated voltage according to UL/CSA	600 V
IP degree of protection	IP20 without enclosure, IP44/IP66/IP67/IP68/IP69 with enclosure

Further technical details	
Characteristics according to EN 61984	10A 250V 4kV 3; 10A 230/400V 4kV 2
Mating cycles	≥ 500
Insulation resistance	≥ 10 GΩ
Contact resistance	≤ 3 mΩ
Weight	9,00 g
Operating temperature range (min, max)	-40 °C ... +125 °C
Conductors stripping length	8 mm (6 mm for 2,5 mm ²)
UL 94 flammability rating	V-0
Tightening torque for PE connection	M4: 1,2 Nm, 10,6 lb.in (Ph2 or 1,0x5,5mm)
Tightening torque for fixing screws	M3: 0,5 Nm; 4,4 lb.in (Ph1 or 0,8 x 5,5 mm)

Material properties	
Main material	Polycarbonate (PC)
Colour	RAL 7032 grey
RoHs conformity	Compliant with exemption 6(c): copper alloy containing up to 4% lead by weight
China RoHs - EFUP	50
REACH SVHC substances	Yes Lead
SCIP number	5a97d67d-dd49-45fe-94c0-411f951ef5ee

Approvals / Standards	
Reference standard	EN 61984:2009-06
Certifications	CSAc, CQC, DNV, BV, EAC
UL	ECBT2
cUL	ECBT8

General ordering information	
EAN13 code	8015747014274
eCl@ss 8.1	27440205
ETIM 7.0	EC000438

Packaging Information	
Packaging length	210,00 mm
Packaging height	200,00 mm
Packaging width	130,00 mm
Packaging weight	2,09 kg
Packaging volume	5,46 dm ³
Packaging description	Carton box
Packaging quantity	200 Pcs
Packaging EAN code	8015747103169
Sub-packaging length	197,00 mm
Sub-packaging height	35,00 mm
Sub-packaging width	113,00 mm
Sub-packaging weight	0,42 kg
Sub-packaging volume	0,78 dm ³
Sub-packaging description	Carton tray
Sub-packaging quantity	40 Pcs
Sub-packaging EAN barcode	8015747103176

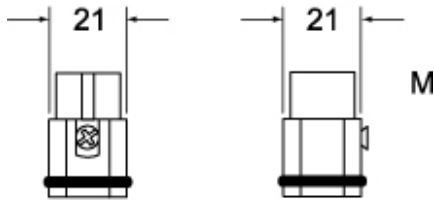
Part number

CDF 07



Catalogue drawings

CDM 07 (N)

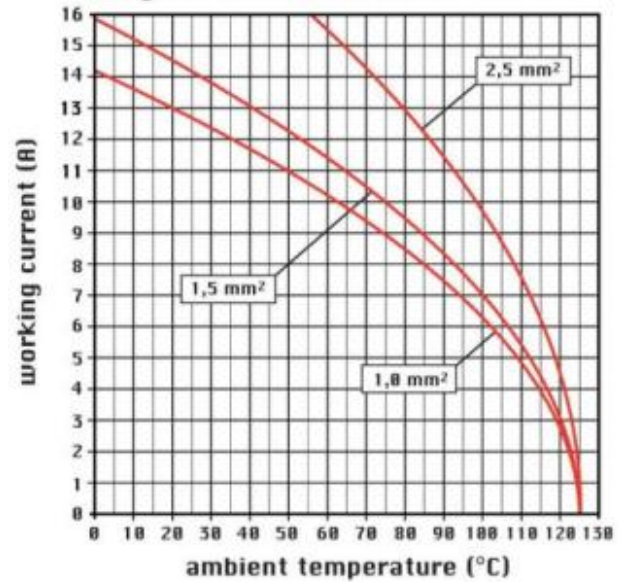


CDF 07 (N)



Catalogue drawings

diagram CD 07 and 08 poles



Notes

STANDARD & HNM (High Number of Matings) MODULES

Standard:

-when in combination with standard contacts and standard frames (CX ... TF/TM), must be mounted either in traditional enclosures or in COB panel supports (both up to 500 matings).

HNM (High Number of Matings):

-when in combination with HNM contacts and HNM frames (RX ... TF/RM), must be mounted either in HNM enclosures (up to 10.000 matings) or in traditional enclosures with one lever (up to 5.000 matings).

Dimensions shown in mm are not binding and may be changed without notice.