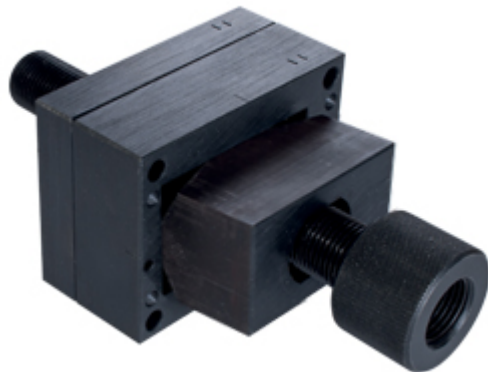


Part number

# CCW PD 25



Punching unit, for panel cut-out of bulkhead mounting housings, for size "66.16"

#### Product description

<b>Product type</b>	Punching unit
<b>Specification</b>	For panel cut-out of bulkhead mounting housings For size "66.16"

#### Further technical details

<b>Weight</b>	2.430,00 g
---------------	------------

#### General ordering information

<b>EAN13 code</b>	8015747230490
<b>eCl@ss 8.1</b>	21043822
<b>ETIM 7.0</b>	EC000166

#### Packaging Information

<b>Sub-packaging weight</b>	2,43 kg
<b>Sub-packaging description</b>	Plastic packaging
<b>Sub-packaging quantity</b>	1 Pcs
<b>Sub-packaging EAN barcode</b>	8015747230599

Part number

**CCW PD 25**



---

## Notes

Dimensions shown in mm are not binding and may be changed without notice.

---