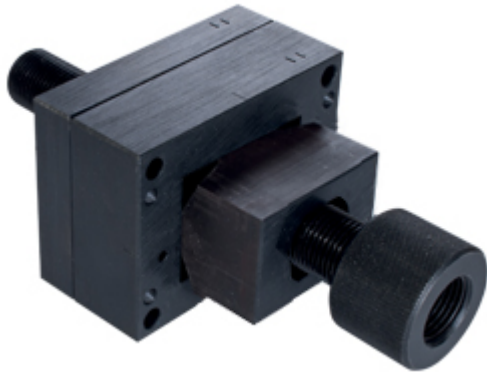


Part number

CCW PD 15



Punching unit, for panel cut-out of bulkhead mounting housings, for size "49.16"

Product description

Product type	Punching unit
Specification	For panel cut-out of bulkhead mounting housings For size "49.16"

Further technical details

Weight	2.190,00 g
---------------	------------

General ordering information

EAN13 code	8015747230483
eCl@ss 8.1	21043822
ETIM 7.0	EC000166

Packaging Information

Sub-packaging weight	2,19 kg
Sub-packaging description	Plastic packaging
Sub-packaging quantity	1 Pcs
Sub-packaging EAN barcode	8015747230582

Part number

CCW PD 15



Notes

Dimensions shown in mm are not binding and may be changed without notice.
