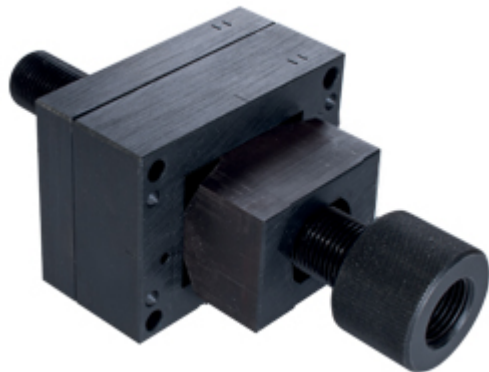


Part number

CCW PD 06



Punching unit, for panel cut-out of bulkhead mounting housings, for size "44.27"

Product description

Product type	Punching unit
Specification	For panel cut-out of bulkhead mounting housings For size "44.27"

Further technical details

Weight	2.415,00 g
---------------	------------

General ordering information

EAN13 code	8015747230506
eCl@ss 8.1	21043822
ETIM 7.0	EC000166

Packaging Information

Sub-packaging weight	2,42 kg
Sub-packaging description	Plastic packaging
Sub-packaging quantity	1 Pcs
Sub-packaging EAN barcode	8015747230605

Part number

CCW PD 06



Notes

Dimensions shown in mm are not binding and may be changed without notice.
