


Part number

TM 3225 IS



Interlocked switched socket-outlet, TM series, 3 poles + N + PE, 2 h (green), 32 A, > 50 V, sectionable fuse carrier 14 x 51 mm, with base box

Product description

Product type	Interlocked switched socket-outlet
Series	TM.. IS/KIS
N. of poles	3 poles + N + 
Clock position	2
Specification	Sectionable fuse carrier 14 x 51 mm With base box

Technical data

Current	32 A
Voltage	> 50 V
IP degree of protection	IP66 / IP67

Further technical details

Operating temperature range (min, max)	-25°C ... +40°C
UL 94 flammability rating	V-2
IK rating (impact degree of protection)	IK10

Material properties

Colour	RAL 7012 grey
---------------	---------------

Approvals / Standards

Reference standard	EN 60309-1, -2 e -4
---------------------------	---------------------

General ordering information

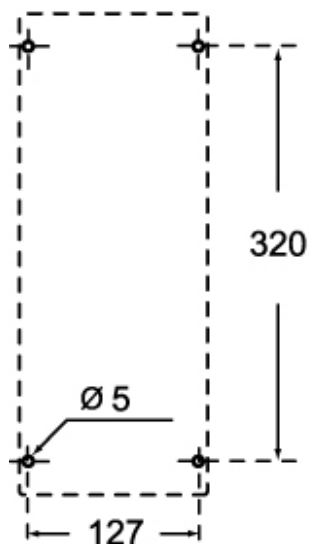
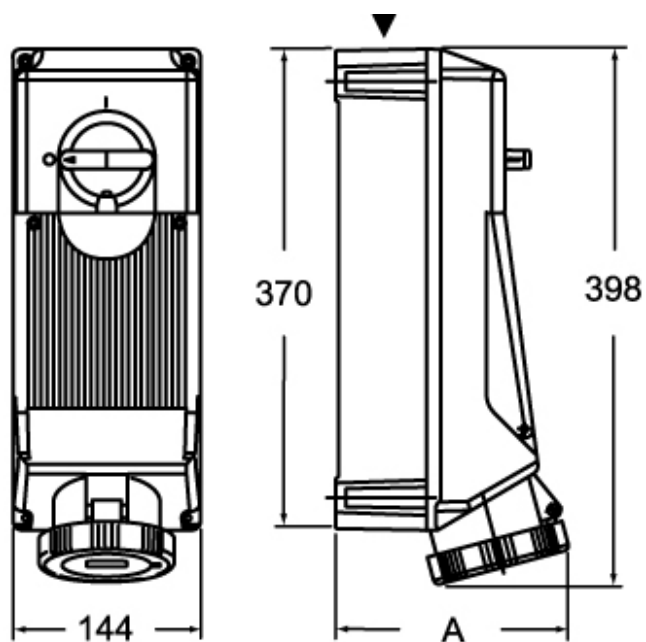
EAN13 code	8015747162517
-------------------	---------------

Part number

TM 3225 IS



Catalogue drawings



	A
2P+⊕	162
3P+⊕	162
3P+N+⊕	169