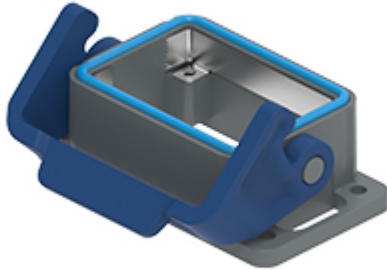


Part number

# THIC 06 LB



Bulkhead mounting housing, T-TYPE/C series, with 1 lever, size "44.27", with integrated protective PE jumpers

#### Product description

<b>Product type</b>	Bulkhead mounting housing
<b>Series</b>	T-TYPE/C
<b>Closing type</b>	With 1 lever
<b>Size</b>	Size 44.27
<b>Cable entry</b>	Without cable entry
<b>Specification</b>	With integrated protective PE jumpers

#### Technical data

<b>IP degree of protection</b>	IP66 / IP69
--------------------------------	-------------

#### Further technical details

<b>Weight</b>	58,00 g
<b>Operating temperature range (min, max)</b>	-50°C ... +70°C

#### Material properties

<b>Main material</b>	Polypropylene (PP)
<b>Other materials</b>	Lever: Polypropylene (PP) Gasket: Silicone rubber PE jumpers: galvanized brass
<b>Colour</b>	RAL 7012 grey, RAL 5005 blue
<b>RoHs conformity</b>	Compliant
<b>China RoHs - EFUP</b>	E
<b>REACH SVHC substances</b>	No

#### General ordering information

<b>EAN13 code</b>	8015747278188
-------------------	---------------

#### Packaging Information

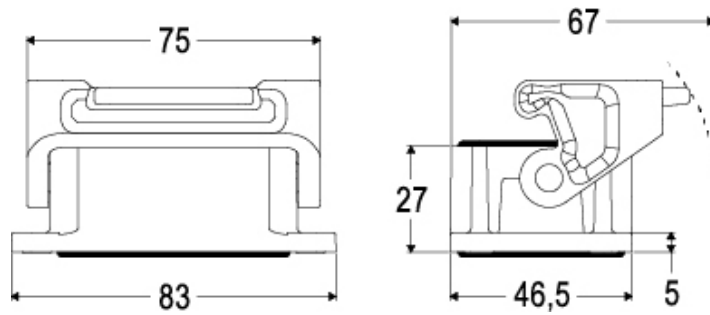
<b>Packaging length</b>	260,00 mm
<b>Packaging height</b>	190,00 mm
<b>Packaging width</b>	220,00 mm
<b>Packaging weight</b>	2,95 kg
<b>Packaging volume</b>	10,87 dm <sup>3</sup>
<b>Packaging description</b>	Carton box
<b>Packaging quantity</b>	40 Pcs
<b>Packaging EAN code</b>	8015747016698
<b>Sub-packaging weight</b>	0,37 kg
<b>Sub-packaging description</b>	Plastic packaging
<b>Sub-packaging quantity</b>	5 Pcs
<b>Sub-packaging EAN barcode</b>	8015747291347

Part number

# THIC 06 LB



Catalogue drawings



Catalogue drawings

