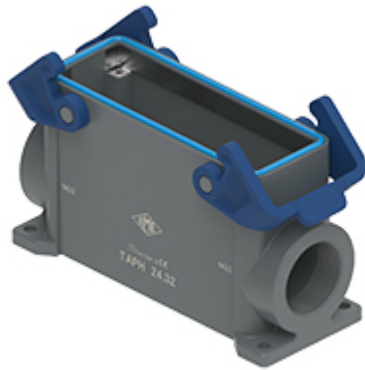


Part number

# TAPC 24.32B



Surface mounting housing, T-TYPE/C series, with 2 levers, M32 cable entry, size "104.27", with integrated protective PE jumpers

| Product description                           |                                       |
|---|---------------------------------------|
| <b>Product type</b>                           | Surface mounting housing              |
| <b>Series</b>                                 | T-TYPE/C                              |
| <b>Closing type</b>                           | With 2 levers                         |
| <b>Size</b>                                   | Size 104.27                           |
| <b>Cable entry</b>                            | With cable entry<br>M32               |
| <b>Specification</b>                          | With integrated protective PE jumpers |
| Technical data                                |                                       |
| <b>IP degree of protection</b>                | IP66 / IP69                           |
| Further technical details                     |                                       |
| <b>Weight</b>                                 | 0,50 g                                |
| <b>Operating temperature range (min, max)</b> | -50°C ... +70°C                       |

| Material properties              |  |
|----------------------------------|--|
| <b>Main material</b>             | Polypropylene (PP)   |
| <b>Other materials</b>           | Lever: Polypropylene (PP)<br>Gasket: Silicone rubber<br>PE jumpers: galvanized brass |
| <b>Colour</b>                    | RAL 7012 grey, RAL 5005 blue   |
| <b>RoHs conformity</b>           | Compliant  |
| <b>China RoHs - EFUP</b>         | E  |
| <b>REACH SVHC substances</b>     | No   |
| General ordering information     |  |
| <b>EAN13 code</b>                | 8015747278348  |
| Packaging Information            |  |
| <b>Packaging length</b>          | 330,00 mm  |
| <b>Packaging height</b>          | 220,00 mm  |
| <b>Packaging width</b>           | 310,00 mm  |
| <b>Packaging volume</b>          | 22,51 dm <sup>3</sup>  |
| <b>Packaging description</b>     | Carton box   |
| <b>Packaging quantity</b>        | 20 Pcs   |
| <b>Packaging EAN code</b>        | 8015747298391  |
| <b>Sub-packaging description</b> | Plastic packaging  |
| <b>Sub-packaging quantity</b>    | 5 Pcs  |
| <b>Sub-packaging EAN barcode</b> | 8015747298407  |

Part number

# TAPC 24.32B



Catalogue drawings

