


Part number

SQV 16115.5



Interlocked switched socket-outlet, SQV series, 3 poles + N + PE, 11 h (red), 16 A, 250/440 ÷ 265/460 V, sectionable fuse carrier 10 x 38 mm

Product description	
Product type	Interlocked switched socket-outlet
Series	SQV
N. of poles	3 poles + N + 
Clock position	11
Specification	Sectionable fuse carrier 10 x 38 mm
Technical data	
Current	16 A
Voltage	250/440V ÷ 265/460V
IP degree of protection	IP55
Further technical details	
Operating temperature range (min, max)	-25°C ... +40°C
IK rating (impact degree of protection)	IK08

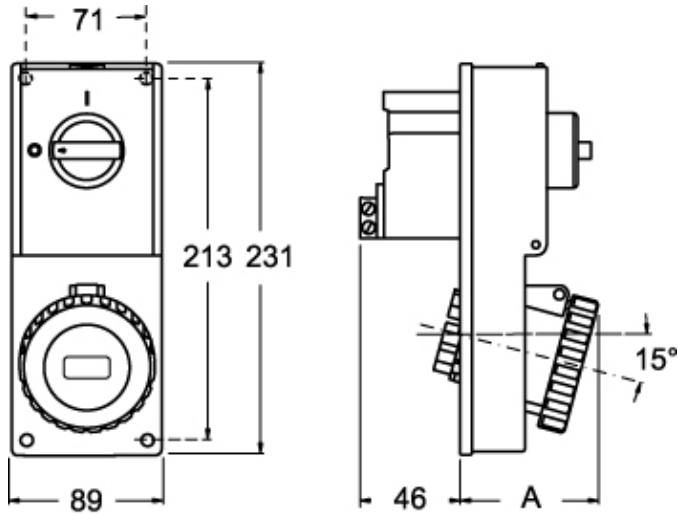
Material properties	
Colour	RAL 7035 grey, RAL 3000 red
Approvals / Standards	
Reference standard	EN 60309-1, -2 e -4
General ordering information	
EAN13 code	8015747160124

Part number

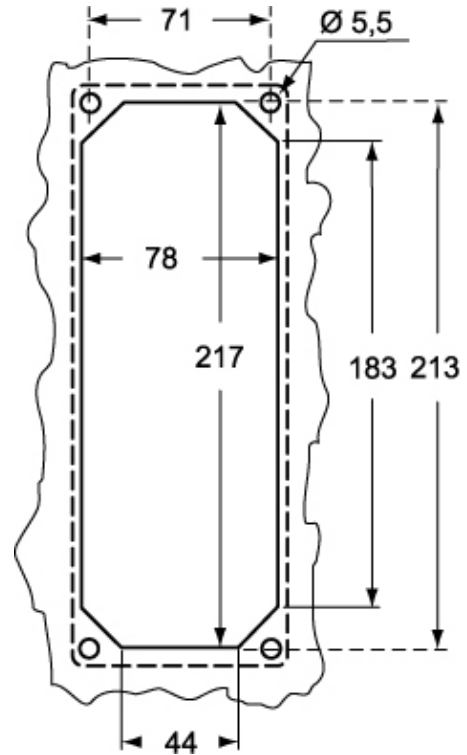
SQV 16115.5



Catalogue drawings



Catalogue drawings



SQV.5		A
16A	2P+⊕	67
	3P+⊕	67
	3P+N+⊕	70