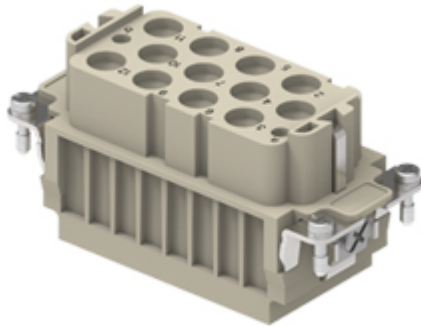


Part number

RXF 12/2



Female insert, RX series, crimp connection, 12 + 2 poles + PE, 40 A 690 V 8 kV 3 / 10 A 250 V 4 kV 3, size "77.27", HNM - High Number of Matings version

| Product description | |
|---|--|
| Product type | Insert |
| Series | RX |
| Connection type | Crimp connection |
| Gender | Female |
| N. of poles | 12 poles + |
| Auxiliary poles | 2 poles |
| Size | Size 77.27 |
| Specification | HNM - High Number of Matings version |
| Technical data | |
| Current | 40 A |
| Voltage | 690 V |
| Rated impulse withstand voltage | 8 kV |
| Pollution degree | 3 |
| Rated voltage according to UL/CSA | 600 V |
| IP degree of protection | IP20 without enclosure, IP65/IP66/IP68/IP69 with enclosure |
| Further technical details | |
| Characteristics according to EN 61984 | 40 A 690 V 8 kV 3 / 10 A 250 V 4 kV 2 |
| Mating cycles | ≥ 10000 |
| Insulation resistance | ≥ 10 GΩ |
| Contact resistance | ≤ 0,3 mΩ (12 poles), ≤ 1 mΩ (2 poles) |
| Weight | 82,00 g |
| Operating temperature range (min, max) | -40 °C ... +125 °C |
| UL 94 flammability rating | V-0 |

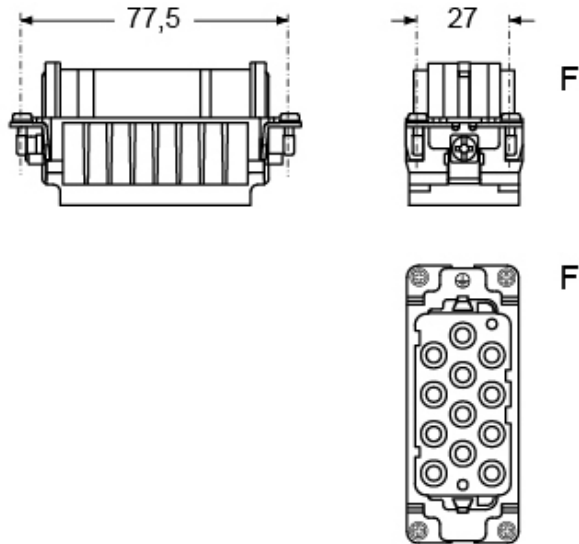
| Material properties | |
|----------------------------------|-------------------------|
| Main material | Polycarbonate (PC) |
| Other materials | Copper alloy (contacts) |
| Colour | RAL 7032 grey |
| RoHs conformity | Compliant |
| China RoHs - EFUP | E |
| REACH SVHC substances | No |
| Approvals / Standards | |
| UL | ECBT2 |
| General ordering information | |
| EAN13 code | 8015747262248 |
| eCl@ss 8.1 | 27440205 |
| ETIM 7.0 | EC000438 |
| Packaging Information | |
| Packaging length | 230,00 mm |
| Packaging height | 110,00 mm |
| Packaging width | 180,00 mm |
| Packaging weight | 1,88 kg |
| Packaging volume | 4,55 dm ³ |
| Packaging description | Carton box |
| Packaging quantity | 20 Pcs |
| Packaging EAN code | 8015747262255 |
| Sub-packaging length | 87,00 mm |
| Sub-packaging height | 36,00 mm |
| Sub-packaging width | 180,00 mm |
| Sub-packaging weight | 0,47 kg |
| Sub-packaging volume | 0,56 dm ³ |
| Sub-packaging description | Carton tray |
| Sub-packaging quantity | 5 Pcs |
| Sub-packaging EAN barcode | 8015747262262 |

Part number

RXF 12/2



Catalogue drawings



Derating curves

