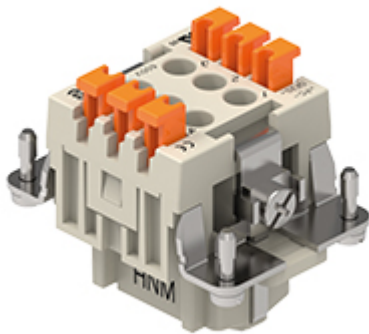



Part number
RSHF 06



Female insert, RSH series, SQUICH® spring terminal connection without tools, 6 poles + PE, 16 A 500 V 6 kV 3, size "44.27", HNM - High Number of Matings version

Product description

| | |
|------------------------|--|
| Product type | Insert |
| Series | RSH |
| Connection type | SQUICH® spring terminal connection without tools |
| Gender | Female |
| N. of poles | 6 poles +  |
| Size | Size 44.27 |
| Specification | HNM - High Number of Matings version |

Technical data

| | |
|--|--|
| Current | 16 A |
| Voltage | 500 V |
| Rated impulse withstand voltage | 6 kV |
| Pollution degree | 3 |
| Rated voltage according to UL/CSA | 600 V |
| Wire cross-section | 0,14 mm ² - 2,50 mm ² |
| AWG size | 26 - 14 |
| Contact type | Turned gold plated |
| IP degree of protection | IP20 without enclosure, IP65/IP66/IP68/IP69 with enclosure |

Further technical details

| | |
|---|----------------|
| Characteristics according to EN 61984 | 16A 500V 6kV 3 |
| Mating cycles | ≥ 10000 |
| Insulation resistance | ≥ 10 GΩ |
| Contact resistance | ≤ 3 mΩ |
| Weight | 50,50 g |
| Operating temperature range (min, max) | -40°C...+125°C |
| Conductors stripping length | 7 mm |
| UL 94 flammability rating | V-0 |

Material properties

| | |
|------------------------------|--|
| Main material | Polycarbonate (PC) |
| Other materials | Contacts: copper alloy |
| Colour | RAL 7032 grey |
| RoHs conformity | Compliant with exemption 6(c): copper alloy containing up to 4% lead by weight |
| China RoHs - EFUP | 50 |
| REACH SVHC substances | Yes Lead |
| SCIP number | 1a9c93ff-0445-4a16-81e3-1609ac5274d6 |

Approvals / Standards

| | |
|-----------------------|----------|
| Certifications | DNV, EAC |
|-----------------------|----------|

General ordering information

| | |
|-------------------|---------------|
| EAN13 code | 8015747281003 |
| eCl@ss 8.1 | 27440205 |
| ETIM 7.0 | EC000438 |

Packaging Information

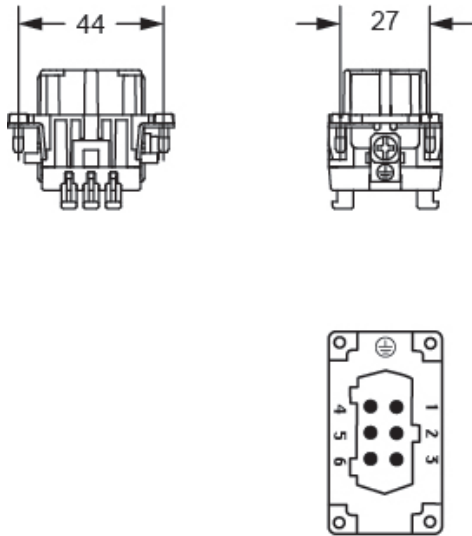
| | |
|----------------------------------|----------------------|
| Packaging length | 245,00 mm |
| Packaging height | 165,00 mm |
| Packaging width | 215,00 mm |
| Packaging weight | 3,53 kg |
| Packaging volume | 8,69 dm ³ |
| Packaging description | Carton box |
| Packaging quantity | 60 Pcs |
| Packaging EAN code | 8015747281010 |
| Sub-packaging length | 197,00 mm |
| Sub-packaging height | 44,00 mm |
| Sub-packaging width | 113,00 mm |
| Sub-packaging weight | 0,59 kg |
| Sub-packaging volume | 0,98 dm ³ |
| Sub-packaging description | Carton tray |
| Sub-packaging quantity | 10 Pcs |
| Sub-packaging EAN barcode | 8015747034036 |

Part number

RSHF 06



Catalogue drawings



Catalogue drawings

RSH 06 poles connector inserts
Maximum current load derating diagram

