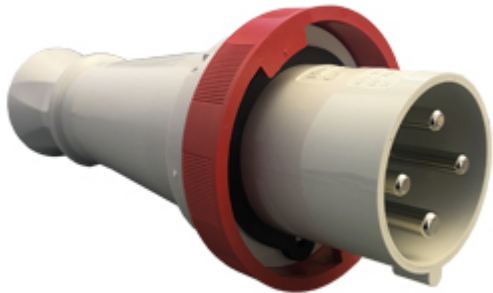



Part number

# PEW 6364 SV



Mobile plug, PLUSO series, 3 poles + PE, 6 h (red), 63 A, 380 ÷ 415 V, straight

| Product description                           |   | Material properties          |   |
|---|---|------------------------------|---|
| <b>Product type</b>                           | Plug<br>Mobile  | <b>Colour</b>                | RAL 7035 grey, RAL 3000 red   |
| <b>Series</b>                                 | PEW...SV, PLUSO   | <b>RoHs conformity</b>       | Compliant with exemption<br>6(c): copper alloy containing up to 4% lead by weight |
| <b>N. of poles</b>                            | 3 poles +  | <b>China RoHs - EFUP</b>     | 50  |
| <b>Clock position</b>                         | 6   | <b>REACH SVHC substances</b> | Yes<br>Lead   |
| <b>Specification</b>                          | Straight  | <b>SCIP number</b>           | Ca7de37f-add8-4b77-9861-279c94903ade  |
| Technical data                                |   | Approvals / Standards        |   |
| <b>Current</b>                                | 63 A  | <b>Reference standard</b>    | EN 60309-1 and -2   |
| <b>Voltage</b>                                | 380 ÷ 415 V   | General ordering information |   |
| <b>IP degree of protection</b>                | IP67  | <b>EAN13 code</b>            | 8015747077569   |
| Further technical details                     |   | Packaging Information        |   |
| <b>Weight</b>                                 | 758,00 g  | <b>Packaging length</b>      | 300,00 mm   |
| <b>Operating temperature range (min, max)</b> | -25°C ... +40°C   | <b>Packaging height</b>      | 130,00 mm   |
|   |   | <b>Packaging width</b>       | 200,00 mm   |
|   |   | <b>Packaging weight</b>      | 1,60 kg   |
|   |   | <b>Packaging volume</b>      | 7,80 dm <sup>3</sup>  |
|   |   | <b>Packaging description</b> | Carton box  |
|   |   | <b>Packaging quantity</b>    | 2 Pcs   |
|   |   | <b>Packaging EAN code</b>    | 8015747077576   |

Part number

# PEW 6364 SV



Catalogue drawings

(63 / 125A) PEW ... SV



| PEW ... SV       | A     | B   | Pg Ø   |
|------------------|-------|-----|--------|
| <b>63A</b> 2P+⊕  | 264,5 | 112 | 36     |
| 3P+⊕             | 264,5 | 112 | 36     |
| 3P+N+⊕           | 264,5 | 112 | 36     |
| <b>125A</b> 2P+⊕ | 310   | 130 | 2" gas |
| 3P+⊕             | 310   | 130 | 2" gas |
| 3P+N+⊕           | 310   | 130 | 2" gas |