


Part number

# PEW 1644 SM



Wall-mounting plug, PLUSO series, 3 poles + PE, 4 h (yellow), 16 A, 100 ÷ 130 V

## Product description

<b>Product type</b>	Plug Wall-mounting
<b>Series</b>	PEW...SM, PLUSO
<b>N. of poles</b>	3 poles + 
<b>Clock position</b>	4

## Technical data

<b>Current</b>	16 A
<b>Voltage</b>	100 ÷ 130 V
<b>IP degree of protection</b>	IP67

## Further technical details

<b>Weight</b>	304,00 g
<b>Operating temperature range (min, max)</b>	-25°C ... +40°C

## Material properties

<b>Colour</b>	RAL 7035 grey, RAL 1021 yellow
<b>RoHs conformity</b>	Compliant with exemption 6(c): copper alloy containing up to 4% lead by weight
<b>China RoHs - EFUP</b>	50
<b>REACH SVHC substances</b>	Yes Lead
<b>SCIP number</b>	Ca7de37f-add8-4b77-9861-279c94903ade

## Approvals / Standards

<b>Reference standard</b>	EN 60309-1 and -2
---------------------------	-------------------

## General ordering information

<b>EAN13 code</b>	8015747072250
-------------------	---------------

## Packaging Information

<b>Packaging length</b>	330,00 mm
<b>Packaging height</b>	175,00 mm
<b>Packaging width</b>	295,00 mm
<b>Packaging weight</b>	3,29 kg
<b>Packaging volume</b>	17,04 dm <sup>3</sup>
<b>Packaging description</b>	Carton box
<b>Packaging quantity</b>	10 Pcs
<b>Packaging EAN code</b>	8015747072267

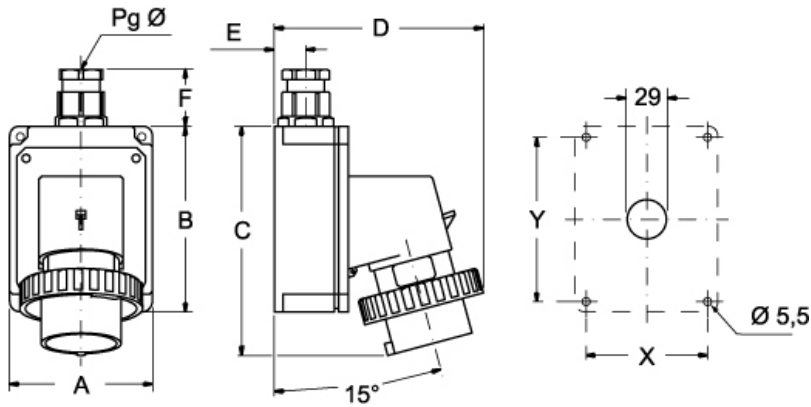
Part number

# PEW 1644 SM



Catalogue drawings

(16 / 32A) PEW ... SM



PEW ... SM	A	B	C	D	E	F	X	Y	Pg Ø
<b>16A</b> 2P+⊕	75	115	144	126	19	35	65	105	16
3P+⊕	75	115	144	134	19	35	65	105	16
3P+N+⊕	100	130	164	145	22	42	85	115	21
<b>32A</b> 2P+⊕	100	130	178	154	22	42	85	115	21
3P+⊕	100	130	178	154	22	42	85	115	21
3P+N+⊕	100	130	178	160	22	42	85	115	21