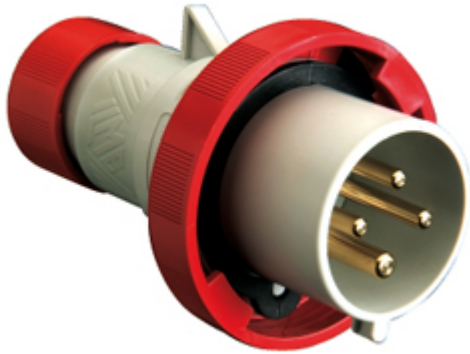



Part number

# PESW 1664 SV



Mobile plug, PLUSO series, SQUICH® quick connection, 3 poles + PE, 6 h (red), 16 A, 380 ÷ 415 V, straight

## Product description

<b>Product type</b>	Plug Mobile
<b>Series</b>	PESW....SV, PLUSO
<b>Connection type</b>	SQUICH® quick connection
<b>N. of poles</b>	3 poles + 
<b>Clock position</b>	6
<b>Specification</b>	Straight

## Technical data

<b>Current</b>	16 A
<b>Voltage</b>	380 ÷ 415 V
<b>IP degree of protection</b>	IP66 / IP67

## Further technical details

<b>Weight</b>	171,00 g
<b>Operating temperature range (min, max)</b>	-25°C ... +40°C

## Material properties

<b>Colour</b>	RAL 7035 grey, RAL 3000 red
<b>RoHs conformity</b>	Compliant with exemption 6(c): copper alloy containing up to 4% lead by weight
<b>China RoHs - EFUP</b>	50
<b>REACH SVHC substances</b>	Yes Lead
<b>SCIP number</b>	Ca7de37f-add8-4b77-9861-279c94903ade

## Approvals / Standards

<b>Reference standard</b>	EN 60309-1 and -2
---------------------------	-------------------

## General ordering information

<b>EAN13 code</b>	8015747187251
-------------------	---------------

## Packaging Information

<b>Packaging length</b>	330,00 mm
<b>Packaging height</b>	175,00 mm
<b>Packaging width</b>	295,00 mm
<b>Packaging weight</b>	3,52 kg
<b>Packaging volume</b>	17,04 dm <sup>3</sup>
<b>Packaging description</b>	Carton box
<b>Packaging quantity</b>	20 Pcs
<b>Packaging EAN code</b>	8015747187282

Part number

# PESW 1664 SV



Catalogue drawings

