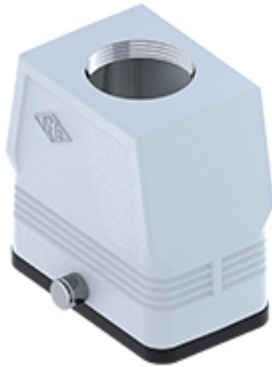


Part number

MFV 10 GYC25



Hood, CENTRAL LEVER series, with 2 pegs, M25 top cable entry without adapter, size "57.27", high construction

Product description

| | |
|----------------------|------------------------|
| Product type | Hood |
| Series | CENTRAL LEVER |
| Closing type | With 2 pegs |
| Size | Size 57.27 |
| Cable entry | Top cable entry M25 |
| Specification | High construction |

Technical data

IP degree of protection IP65

Further technical details

| | |
|---|----------------|
| Weight | 0,50 g |
| Operating temperature range (min, max) | -40°C...+125°C |

Material properties

| | |
|------------------------------|---------------|
| Other materials | Gasket: NBR |
| Colour | RAL 7040 grey |
| RoHs conformity | Compliant |
| China RoHs - EFUP | E |
| REACH SVHC substances | No |

Approvals / Standards

| | |
|------------|-------|
| UL | ECBT2 |
| cUL | ECBT8 |

General ordering information

| | |
|-------------------|---------------|
| EAN13 code | 8015747266994 |
| eCl@ss 8.1 | 27440202 |
| ETIM 7.0 | EC000437 |

Packaging Information

| | |
|----------------------------------|-------------------|
| Packaging length | 150,00 mm |
| Packaging height | 160,00 mm |
| Packaging width | 300,00 mm |
| Packaging description | Carton box |
| Packaging quantity | 20 Pcs |
| Packaging EAN code | 8015747044516 |
| Sub-packaging description | Plastic packaging |
| Sub-packaging quantity | 5 Pcs |
| Sub-packaging EAN barcode | 8015747044523 |

Part number

MFV 10 GYC25



Catalogue drawings

