

Part number

M7AP 06 LS40



Surface mounting housing, V-TYPE series, with 1 lever, M40 cable entry, size "44.27", high construction, with metal cover

| Product description | |
|---|-------------------------------------|
| Product type | Surface mounting housing |
| Series | V-TYPE |
| Closing type | With 1 lever |
| Size | Size 44.27 |
| Cable entry | With cable entry M40 |
| Specification | High construction, with metal cover |
| Technical data | |
| IP degree of protection | IP66 / IP67 / IP69 |
| Further technical details | |
| Operating temperature range (min, max) | -40°C...+125°C |

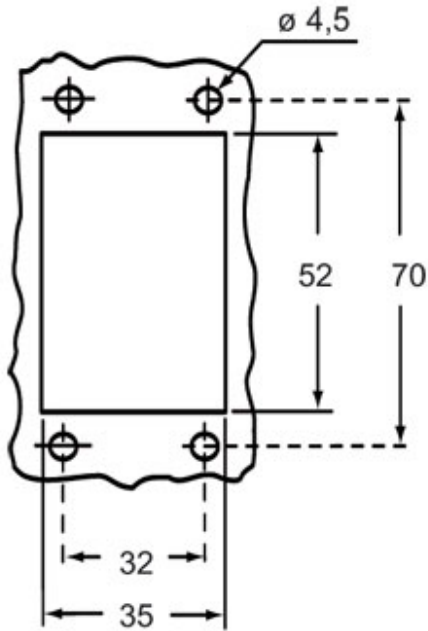
| Material properties | |
|------------------------------|---------------------------------------|
| Other materials | Lever: Stainless steel Gasket: NBR |
| Colour | RAL 7040 grey |
| RoHs conformity | Compliant |
| China RoHs - EFUP | E |
| REACH SVHC substances | No |
| Approvals / Standards | |
| Certifications | DNV, BV |
| UL | ECBT2 |
| cUL | ECBT8 |
| General ordering information | |
| EAN13 code | 8015747240109 |
| eCl@ss 8.1 | 27440202 |
| ETIM 7.0 | EC000437 |

Part number

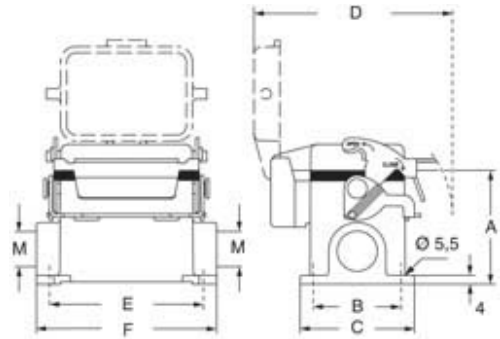
M7AP 06 LS40



Catalogue drawings



Catalogue drawings



| type | A | B | C | D | E | F |
|------------|----|----|----|----|----|----|
| M7P 06 LS | 53 | 40 | 52 | 91 | 70 | 82 |
| M7AP 06 LS | 73 | 45 | 57 | 91 | 70 | 82 |