


Part number

# KI 1663 EB6



Interlocked switched socket-outlet, EB6 series, 2 poles + PE, 6 h (blue), 16 A, 200 ÷ 250 V, without fuse-carrier

| Product description                            |   | Material properties                 |  |
|--|---|-------------------------------------|--|
| <b>Product type</b>                            | Interlocked switched socket-outlet  | <b>Colour</b>                       | RAL 7035 grey, RAL 5015 blue   |
| <b>Series</b>                                  | KI...EB6  |                                     | Compliant with exemption 6(c): copper alloy containing up to 4% lead by weight |
| <b>N. of poles</b>                             | 2 poles +  | <b>RoHs conformity</b>              | 6(c): copper alloy containing up to 4% lead by weight                          |
| <b>Clock position</b>                          | 6   | <b>China RoHs - EFUP</b>            | 50   |
| <b>Size</b>                                    | 114x228 fixing plates FC xx41 TB  | <b>REACH SVHC substances</b>        | Yes<br>Lead  |
| <b>Cable entry</b>                             | M25   | <b>SCIP number</b>                  | Ce861c8d-b979-403b-96d9-80aef6dc281d   |
| <b>Specification</b>                           | Without fuse-carrier  | <b>Approvals / Standards</b>        |  |
| <b>Technical data</b>                          |   | <b>Reference standard</b>           | EN 60309-1, -2 e -4  |
| <b>Current</b>                                 | 16 A  | <b>General ordering information</b> |  |
| <b>Voltage</b>                                 | 200 ÷ 250 V   | <b>EAN13 code</b>                   | 8015747192576  |
| <b>IP degree of protection</b>                 | IP66  | <b>Packaging Information</b>        |  |
| <b>Further technical details</b>               |   | <b>Packaging length</b>             | 520,00 mm  |
| <b>Weight</b>                                  | 854,00 g  | <b>Packaging height</b>             | 305,00 mm  |
| <b>Operating temperature range (min, max)</b>  | -25°C ... +40°C   | <b>Packaging width</b>              | 490,00 mm  |
| <b>IK rating (impact degree of protection)</b> | IK10  | <b>Packaging weight</b>             | 15,45 kg   |
|  |   | <b>Packaging volume</b>             | 77,71 dm <sup>3</sup>  |
|  |   | <b>Packaging description</b>        | Carton box   |
|  |   | <b>Packaging quantity</b>           | 15 Pcs   |
|  |   | <b>Packaging EAN code</b>           | 8015747196611  |
|  |   | <b>Sub-packaging length</b>         | 270,00 mm  |
|  |   | <b>Sub-packaging height</b>         | 125,00 mm  |
|  |   | <b>Sub-packaging width</b>          | 120,00 mm  |
|  |   | <b>Sub-packaging weight</b>         | 1,03 kg  |
|  |   | <b>Sub-packaging volume</b>         | 4,05 dm <sup>3</sup>   |
|  |   | <b>Sub-packaging description</b>    | Carton box   |
|  |   | <b>Sub-packaging quantity</b>       | 1 Pcs  |
|  |   | <b>Sub-packaging EAN barcode</b>    | 8015747192644  |



Catalogue drawings

**KI .. EB6 interlocked socket-outlets without fuse carrier**



- Compliant with EN 60309-1, 2 e 4
- Enclosures and inserts in insulating self-extinguishing thermoplastic material, RAL 7035 grey
- 16A and 32A types with spring lid
- Factory installed internal wiring
- Cable entry with threaded metric opening
- 'ZG' series switch, with 32A rating
- Mechanical interlock that prevents:
  - the switch from being turned on without the plug inserted and the plug from being removed while the switch is on
- Lockable switch
- Inspection panel, openable only when the switch is off.

**16A  
IP66 degree of protection**



**32A  
IP66 degree of protection**



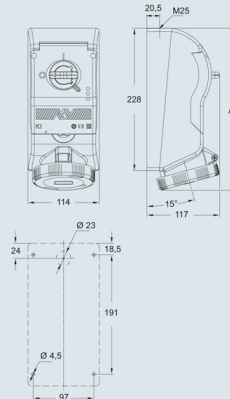
| Poles       | Frequency Hz | Voltage V         | Earthing contact position h | Part No.     | Colour      | Part No.     | Colour      |        |
|-------------|--------------|-------------------|-----------------------------|--------------|-------------|--------------|-------------|--------|
| 2P+Ⓢ        | 50 and 60    | 100 + 130         | 4                           | KI 1643 EB6  | Yellow      | KI 3243 EB6  | Yellow      |        |
|             | 50 and 60    | 200 + 250         | 6                           | KI 1663 EB6  | Blue        | KI 3263 EB6  | Blue        |        |
|             | 50 and 60    | 380 + 415         | 9                           | KI 1693 EB6  | Red         | KI 3293 EB6  | Red         |        |
|             | 50 and 60    | 480 + 500         | 7                           | KI 1673 EB6  | Black       | KI 3273 EB6  | Black       |        |
|             | 50 and 60    | ins. transformer  | 12                          | KI 16123 EB6 | a.v.        | KI 32123 EB6 | a.v.        |        |
|             | > 300 + 500  | > 50              | 2                           | KI 1623 EB6  | *           | KI 3223 EB6  | *           |        |
|             | c.c.         | > 50 + 250        | 3                           | KI 1633 EB6  | a.v.        | KI 3233 EB6  | a.v.        |        |
| 3P+Ⓢ        | 50 and 60    | 100 + 130         | 4                           | KI 1644 EB6  | Yellow      | KI 3244 EB6  | Yellow      |        |
|             | 50 and 60    | 200 + 250         | 9                           | KI 1694 EB6  | Blue        | KI 3294 EB6  | Blue        |        |
|             | 50 and 60    | 380 + 415         | 6                           | KI 1664 EB6  | Red         | KI 3264 EB6  | Red         |        |
|             | 60           | 440 + 460         | 11                          | KI 16114 EB6 | Black       | KI 32114 EB6 | Black       |        |
|             | 50 and 60    | 480 + 500         | 7                           | KI 1674 EB6  | Black       | KI 3274 EB6  | Black       |        |
|             | 50           | 380               | 3                           | KI 1634 EB6  | Red         | KI 3234 EB6  | Red         |        |
|             | 60           | 440               | 3                           | KI 1634 EB6  | Red         | KI 3234 EB6  | Red         |        |
|             | 100 + 300    | > 50              | 10                          | KI 16104 EB6 | *           | KI 32104 EB6 | *           |        |
|             | > 300 + 500  | > 50              | 2                           | KI 1624 EB6  | *           | KI 3224 EB6  | *           |        |
|             | 3P+N+Ⓢ       | 50 and 60         | 57/100 + 75/130             | 4            | KI 1645 EB6 | Yellow       | KI 3245 EB6 | Yellow |
|             |              | 50 and 60         | 120/208 + 144/250           | 9            | KI 1695 EB6 | Blue         | KI 3295 EB6 | Blue   |
| 50 and 60   |              | 200/346 + 240/415 | 6                           | KI 1665 EB6  | Red         | KI 3265 EB6  | Red         |        |
| 50 and 60   |              | 277/480 + 288/500 | 7                           | KI 1675 EB6  | Black       | KI 3275 EB6  | Black       |        |
| 60          |              | 250/440 + 255/460 | 11                          | KI 16115 EB6 | Black       | KI 32115 EB6 | Black       |        |
| 50          |              | 220/380           | 3                           | KI 1635 EB6  | Red         | KI 3235 EB6  | Red         |        |
| 60          |              | 250/440           | 3                           | KI 1635 EB6  | Red         | KI 3235 EB6  | Red         |        |
| > 300 + 500 |              | > 50              | 2                           | KI 1625 EB6  | *           | KI 3225 EB6  | *           |        |

**Legend**

A.V. = Colour according to voltage

\*) Green may be used together with the colour of the operating range for frequencies above 60 Hz and up to a maximum of 500 Hz

**Dimensions in mm**



|     | poles  | A   |
|-----|--------|-----|
| 16A | 2P+Ⓢ   | 252 |
|     | 3P+Ⓢ   | 252 |
|     | 3P+N+Ⓢ | 252 |
|     | 2P+Ⓢ   | 260 |
| 32A | 3P+Ⓢ   | 260 |
|     | 3P+N+Ⓢ | 260 |

Dimensions indicated are not binding and may be changed without prior notice.