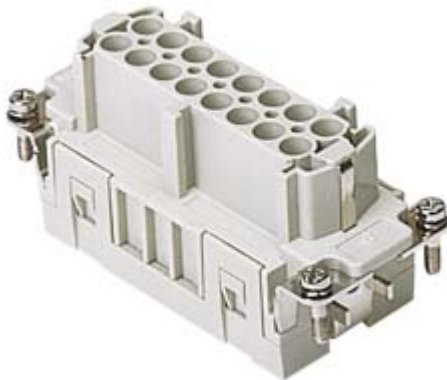


Part number
JSEF 16



Female insert, JSE series, spring terminal connection, 16 poles + PE, 16 A 500 V 6 kV 3, size "77.27"

Product description		Material properties	
Product type	Insert	Main material	Polycarbonate (PC)
Series	JSE	Other materials	Contacts: copper alloy
Connection type	Spring terminal connection	Colour	RAL 7035 grey
Gender	Female	RoHs conformity	Compliant with exemption 6(c): copper alloy containing up to 4% lead by weight
N. of poles	16 poles +	China RoHs - EFUP	50
Size	Size 77.27	REACH SVHC substances	Yes Lead
Technical data		SCIP number	1a9c93ff-0445-4a16-81e3-1609ac5274d6
Current	16 A	Approvals / Standards	
Voltage	500 V	Reference standard	EN 61984:2009-06
Rated impulse withstand voltage	6 kV	Certifications	CSA, CQC, DNV, BV, EAC
Pollution degree	3	UL	ECBT2
Rated voltage according to UL/CSA	600V	General ordering information	
Wire cross-section	0,14 mm ² - 2,50 mm ²	EAN13 code	8015747204750
AWG size	26 - 14	Packaging Information	
Contact type	Turned tin plated	Packaging length	450,00 mm
IP degree of protection	IP20 without enclosure, IP65/IP66/IP68/IP69 with enclosure	Packaging height	175,00 mm
Further technical details		Packaging width	230,00 mm
Characteristics according to EN 61984	16A 500V 6kV 3; 16A 400/690V 6kV 2	Packaging weight	7,76 kg
Mating cycles	≥ 200	Packaging volume	18,11 dm ³
Insulation resistance	≥ 10 GΩ	Packaging description	Carton box
Weight	97,00 g	Packaging quantity	80 Pcs
Operating temperature range (min, max)	-40 °C ... +125 °C	Packaging EAN code	8015747204897
UL 94 flammability rating	V-0	Sub-packaging length	87,00 mm
		Sub-packaging height	36,00 mm
		Sub-packaging width	180,00 mm
		Sub-packaging weight	0,49 kg
		Sub-packaging volume	0,56 dm ³
		Sub-packaging description	Carton tray
		Sub-packaging quantity	5 Pcs
		Sub-packaging EAN barcode	8015747204903